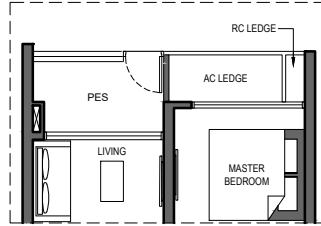


# 1 BEDROOM (LUXURY)

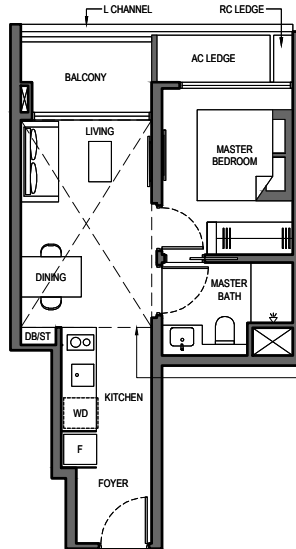
## TYPE 1BR 1-PES

42 SQM/ 452 SQFT  
 (INCLUSIVE OF 4 SQM PES & 2 SQM AC LEDGE)  
 BLOCK 6 #01-19 (mirrored)  
 BLOCK 8 #01-22  
 BLOCK 12 #01-39



## TYPE 1BR 1

42 SQM/ 452 SQFT  
 (INCLUSIVE OF 4 SQM BALCONY & 2 SQM AC LEDGE)  
 BLOCK 6 #02-19 to #17-19 (mirrored)  
 BLOCK 8 #02-22 to #17-22  
 BLOCK 12 #02-39 to #17-39



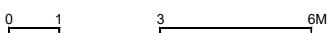
Dotted line denotes strata void complete with bulkhead at unit Type 1BR 1-H

## TYPE 1BR 1-H

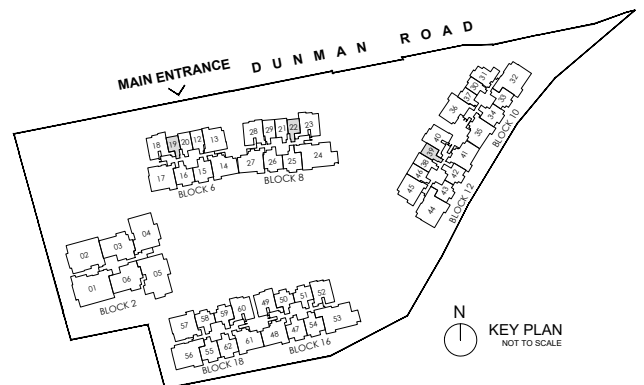
54 SQM/ 581 SQFT  
 (INCLUSIVE OF 4 SQM BALCONY,  
 2 SQM AC LEDGE & 12 SQM STRATA VOID)  
 BLOCK 6 #18-19 (mirrored)  
 BLOCK 8 #18-22  
 BLOCK 12 #18-39

### LEGEND:

|    |                    |    |                                                 |
|----|--------------------|----|-------------------------------------------------|
| F  | FRIDGE             | AC | AIR-CONDITIONER                                 |
| WD | WASHER CUM DRYER   | RC | REINFORCED CONCRETE (EXCLUDED FROM STRATA AREA) |
| DB | DISTRIBUTION BOARD | ⊠  | VOID SPACE (EXCLUDED FROM STRATA AREA)          |
| ST | STORE              |    |                                                 |



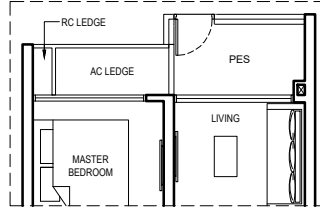
ALL PLANS ARE SUBJECT TO CHANGES BY THE RELEVANT AUTHORITIES.  
 MEASUREMENTS ARE APPROXIMATE ONLY AND SUBJECT TO FINAL SURVEY.  
 INFORMATION ACCURATE AT POINT OF PRINTING.  
 BP NO.: A1716-00003-2022-BP01 DATED 15 MAY 2023



# 1 BEDROOM (LUXURY)

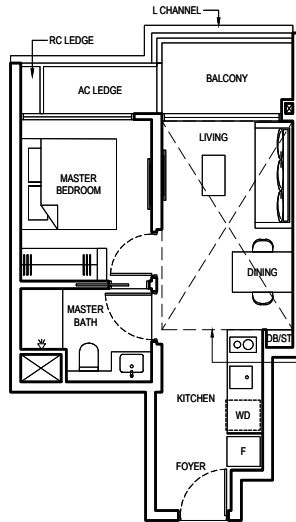
## TYPE 1BR 2-PES

42 SQM/ 452 SQFT  
 (INCLUSIVE OF 5 SQM PES & 2 SQM AC LEDGE)  
 BLOCK 10 #01-30  
 #01-37 (mirrored)



## TYPE 1BR 2

42 SQM/ 452 SQFT  
 (INCLUSIVE OF 5 SQM BALCONY & 2 SQM AC LEDGE)  
 BLOCK 10 #02-30 to #17-30  
 #02-37 to #17-37 (mirrored)



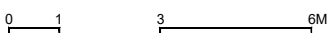
Dotted line denotes strata void complete with bulkhead at unit Type 1BR 2-H

## TYPE 1BR 2-H

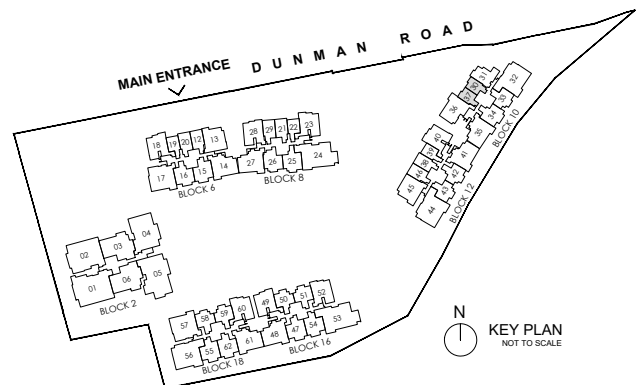
54 SQM/ 581 SQFT  
 (INCLUSIVE OF 5 SQM BALCONY,  
 2 SQM AC LEDGE & 12 SQM STRATA VOID)  
 BLOCK 10 #18-30  
 #18-37 (mirrored)

### LEGEND:

- |    |                    |    |                                                 |
|----|--------------------|----|-------------------------------------------------|
| F  | FRIDGE             | AC | AIR-CONDITIONER                                 |
| WD | WASHER CUM DRYER   | RC | REINFORCED CONCRETE (EXCLUDED FROM STRATA AREA) |
| DB | DISTRIBUTION BOARD | ⊠  | VOID SPACE (EXCLUDED FROM STRATA AREA)          |
| ST | STORE              |    |                                                 |



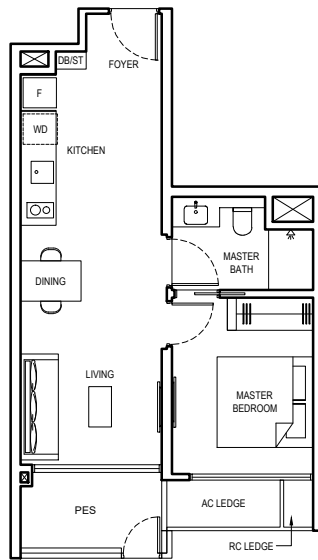
ALL PLANS ARE SUBJECT TO CHANGES BY THE RELEVANT AUTHORITIES.  
 MEASUREMENTS ARE APPROXIMATE ONLY AND SUBJECT TO FINAL SURVEY.  
 INFORMATION ACCURATE AT POINT OF PRINTING.  
 BP NO.: A1716-00003-2022-BP01 DATED 15 MAY 2023



# 1 BEDROOM (LUXURY)

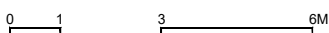
## TYPE 1BR 3-PES

51 SQM/ 549 SQFT  
 (INCLUSIVE OF 5 SQM PES & 2 SQM AC LEDGE)  
 BLOCK 10 #01-33  
 BLOCK 12 #01-43 (mirrored)

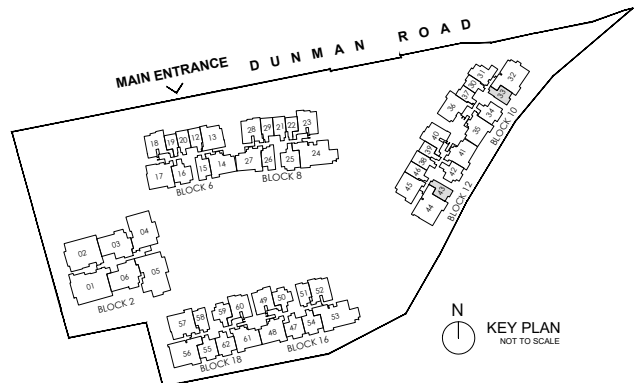


### LEGEND:

|    |                    |    |                                                 |
|----|--------------------|----|-------------------------------------------------|
| F  | FRIDGE             | AC | AIR-CONDITIONER                                 |
| WD | WASHER CUM DRYER   | RC | REINFORCED CONCRETE (EXCLUDED FROM STRATA AREA) |
| DB | DISTRIBUTION BOARD | ⊠  | VOID SPACE (EXCLUDED FROM STRATA AREA)          |
| ST | STORE              |    |                                                 |



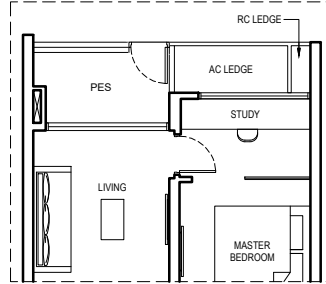
ALL PLANS ARE SUBJECT TO CHANGES BY THE RELEVANT AUTHORITIES.  
 MEASUREMENTS ARE APPROXIMATE ONLY AND SUBJECT TO FINAL SURVEY.  
 INFORMATION ACCURATE AT POINT OF PRINTING.  
 BP NO.: A1716-00003-2022-BP01 DATED 15 MAY 2023



# 1 BEDROOM + STUDY (LUXURY)

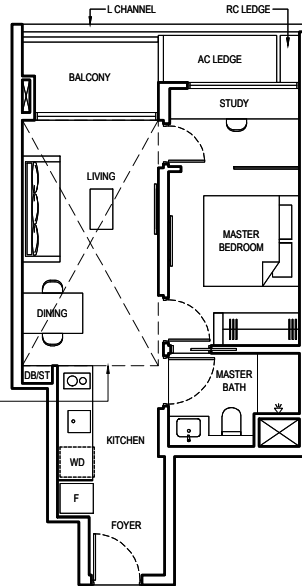
## TYPE 1BR S1-PES

51 SQM/ 549 SQFT  
 (INCLUSIVE OF 5 SQM PES & 2 SQM AC LEDGE)  
 BLOCK 6 #01-20  
 BLOCK 8 #01-29  
 BLOCK 12 #01-46



## TYPE 1BR S1

51 SQM/ 549 SQFT  
 (INCLUSIVE OF 5 SQM BALCONY & 2 SQM AC LEDGE)  
 BLOCK 6 #02-20 to #17-20  
 BLOCK 8 #02-29 to #17-29  
 BLOCK 12 #02-46 to #17-46



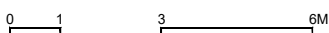
## TYPE 1BR S1-H

66 SQM/ 710 SQFT  
 (INCLUSIVE OF 5 SQM BALCONY,  
 2 SQM AC LEDGE & 15 SQM STRATA VOID)  
 BLOCK 6 #18-20  
 BLOCK 8 #18-29  
 BLOCK 12 #18-46

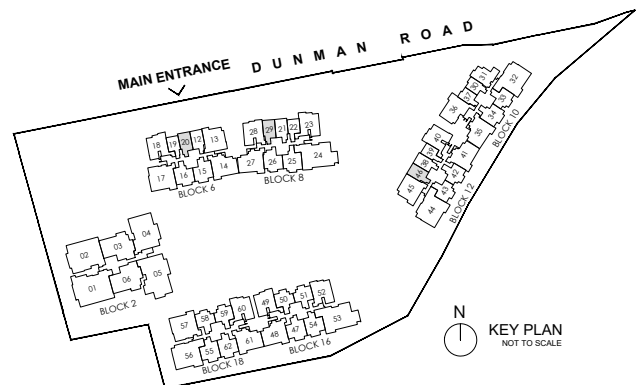
Dotted line denotes strata void complete with bulkhead at unit Type 1BR S1-H

### LEGEND:

- |    |                    |    |                                                 |
|----|--------------------|----|-------------------------------------------------|
| F  | FRIDGE             | AC | AIR-CONDITIONER                                 |
| WD | WASHER CUM DRYER   | RC | REINFORCED CONCRETE (EXCLUDED FROM STRATA AREA) |
| DB | DISTRIBUTION BOARD | ⊠  | VOID SPACE (EXCLUDED FROM STRATA AREA)          |
| ST | STORE              |    |                                                 |



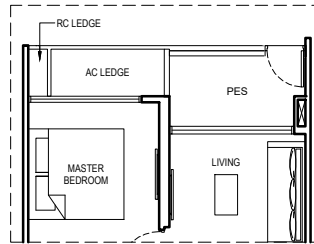
ALL PLANS ARE SUBJECT TO CHANGES BY THE RELEVANT AUTHORITIES.  
 MEASUREMENTS ARE APPROXIMATE ONLY AND SUBJECT TO FINAL SURVEY.  
 INFORMATION ACCURATE AT POINT OF PRINTING.  
 BP NO.: A1716-00003-2022-BP01 DATED 15 MAY 2023



# 1 BEDROOM + STUDY (LUXURY)

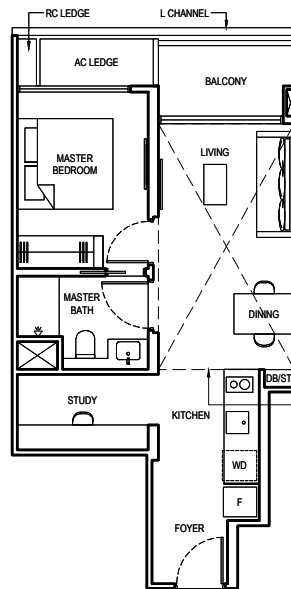
## TYPE 1BR S2-PES

51 SQM/ 549 SQFT  
 (INCLUSIVE OF 5 SQM PES & 2 SQM AC LEDGE)  
 BLOCK 6 #01-12  
 BLOCK 8 #01-21  
 BLOCK 12 #01-38



## TYPE 1BR S2

51 SQM/ 549 SQFT  
 (INCLUSIVE OF 5 SQM BALCONY & 2 SQM AC LEDGE)  
 BLOCK 6 #02-12 to #17-12  
 BLOCK 8 #02-21 to #17-21  
 BLOCK 12 #02-38 to #17-38



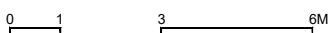
Dotted line denotes strata void complete with bulkhead at unit Type 1BR S2-H

## TYPE 1BR S2-H

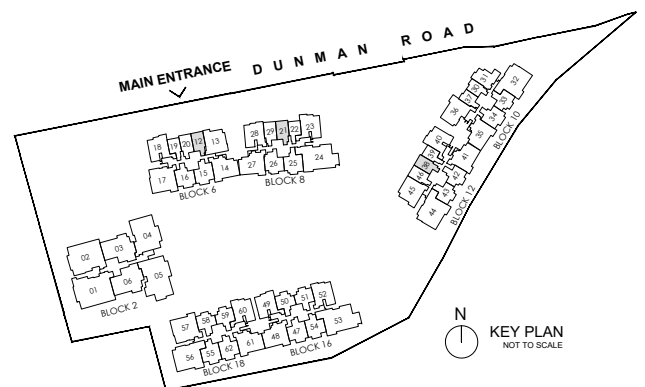
66 SQM/ 710 SQFT  
 (INCLUSIVE OF 5 SQM BALCONY,  
 2 SQM AC LEDGE & 15 SQM STRATA VOID)  
 BLOCK 6 #18-12  
 BLOCK 8 #18-21  
 BLOCK 12 #18-38

### LEGEND:

|    |                    |    |                                                 |
|----|--------------------|----|-------------------------------------------------|
| F  | FRIDGE             | AC | AIR-CONDITIONER                                 |
| WD | WASHER CUM DRYER   | RC | REINFORCED CONCRETE (EXCLUDED FROM STRATA AREA) |
| DB | DISTRIBUTION BOARD | ⊠  | VOID SPACE (EXCLUDED FROM STRATA AREA)          |
| ST | STORE              |    |                                                 |



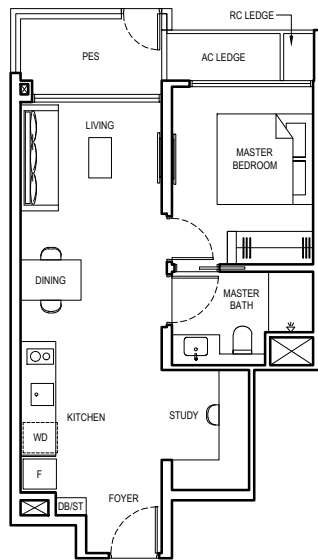
ALL PLANS ARE SUBJECT TO CHANGES BY THE RELEVANT AUTHORITIES.  
 MEASUREMENTS ARE APPROXIMATE ONLY AND SUBJECT TO FINAL SURVEY.  
 INFORMATION ACCURATE AT POINT OF PRINTING.  
 BP NO.: A1716-00003-2022-BP01 DATED 15 MAY 2023



# 1 BEDROOM + STUDY (LUXURY)

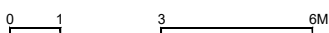
## TYPE 1BR S3-PES

55 SQM / 592 SQFT  
 (INCLUSIVE OF 5 SQM PES & 2 SQM AC LEDGE)  
 BLOCK 16 #01-51  
 BLOCK 18 #01-58 (mirrored)

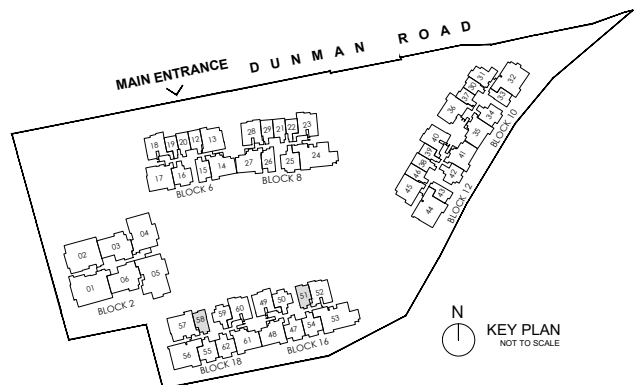


### LEGEND:

|    |                    |    |                                                 |
|----|--------------------|----|-------------------------------------------------|
| F  | FRIDGE             | AC | AIR-CONDITIONER                                 |
| WD | WASHER CUM DRYER   | RC | REINFORCED CONCRETE (EXCLUDED FROM STRATA AREA) |
| DB | DISTRIBUTION BOARD | ⊠  | VOID SPACE (EXCLUDED FROM STRATA AREA)          |
| ST | STORE              |    |                                                 |



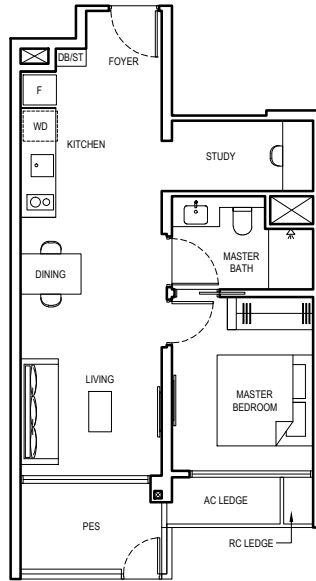
ALL PLANS ARE SUBJECT TO CHANGES BY THE RELEVANT AUTHORITIES.  
 MEASUREMENTS ARE APPROXIMATE ONLY AND SUBJECT TO FINAL SURVEY.  
 INFORMATION ACCURATE AT POINT OF PRINTING.  
 BP NO.: A1716-00003-2022-BP01 DATED 15 MAY 2023



# 1 BEDROOM + STUDY (LUXURY)

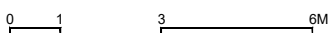
## TYPE 1BR S4-PES

56 SQM/ 603 SQFT  
 (INCLUSIVE OF 6 SQM PES & 2 SQM AC LEDGE)  
 BLOCK 6 #01-15

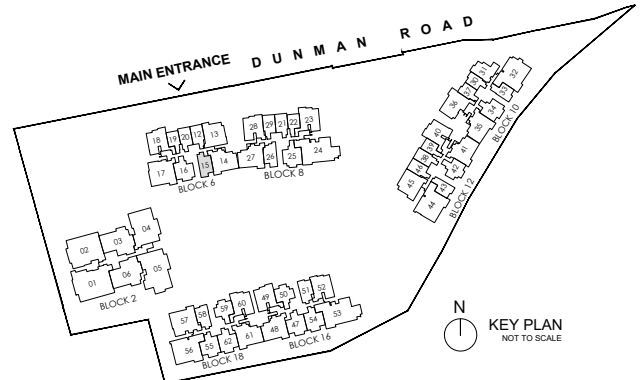


### LEGEND:

|    |                    |    |                                                 |
|----|--------------------|----|-------------------------------------------------|
| F  | FRIDGE             | AC | AIR-CONDITIONER                                 |
| WD | WASHER CUM DRYER   | RC | REINFORCED CONCRETE (EXCLUDED FROM STRATA AREA) |
| DB | DISTRIBUTION BOARD | ⊠  | VOID SPACE (EXCLUDED FROM STRATA AREA)          |
| ST | STORE              |    |                                                 |



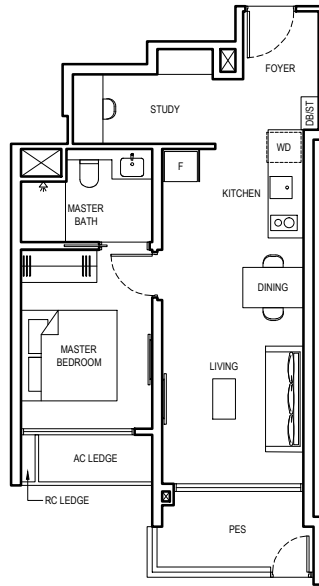
ALL PLANS ARE SUBJECT TO CHANGES BY THE RELEVANT AUTHORITIES.  
 MEASUREMENTS ARE APPROXIMATE ONLY AND SUBJECT TO FINAL SURVEY.  
 INFORMATION ACCURATE AT POINT OF PRINTING.  
 BP NO.: A1716-00003-2022-BP01 DATED 15 MAY 2023



# 1 BEDROOM + STUDY (LUXURY)

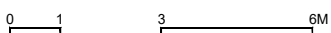
## TYPE 1BR S5-PES

55 SQM / 592 SQFT  
 (INCLUSIVE OF 6 SQM PES & 3 SQM AC LEDGE)  
 BLOCK 8 #01-26

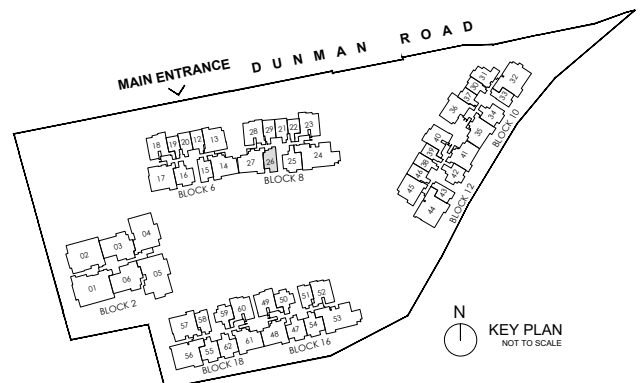


### LEGEND:

- |    |                    |    |                                                 |
|----|--------------------|----|-------------------------------------------------|
| F  | FRIDGE             | AC | AIR-CONDITIONER                                 |
| WD | WASHER CUM DRYER   | RC | REINFORCED CONCRETE (EXCLUDED FROM STRATA AREA) |
| DB | DISTRIBUTION BOARD | ⊠  | VOID SPACE (EXCLUDED FROM STRATA AREA)          |
| ST | STORE              |    |                                                 |



ALL PLANS ARE SUBJECT TO CHANGES BY THE RELEVANT AUTHORITIES.  
 MEASUREMENTS ARE APPROXIMATE ONLY AND SUBJECT TO FINAL SURVEY.  
 INFORMATION ACCURATE AT POINT OF PRINTING.  
 BP NO.: A1716-00003-2022-BP01 DATED 15 MAY 2023

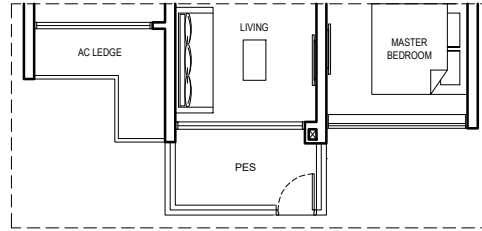




# 2 BEDROOM (LUXURY)

## TYPE 2BR 1-PES

62 SQM/ 667 SQFT  
 (INCLUSIVE OF 5 SQM PES & 4 SQM AC LEDGE)  
 BLOCK 12 #01-42  
 BLOCK 16 #01-50  
 BLOCK 18 #01-59 (mirrored)

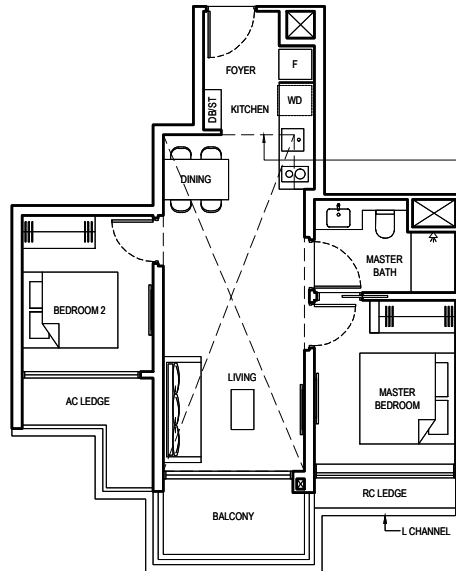


## TYPE 2BR 1

62 SQM/ 667 SQFT  
 (INCLUSIVE OF 5 SQM BALCONY & 4 SQM AC LEDGE)  
 BLOCK 12 #02-42 to #17-42  
 BLOCK 16 #02-50 to #17-50  
 BLOCK 18 #02-59 to #17-59 (mirrored)

## TYPE 2BR 1-H

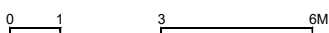
83 SQM/ 893 SQFT  
 (INCLUSIVE OF 5 SQM BALCONY,  
 4 SQM AC LEDGE & 21 SQM STRATA VOID)  
 BLOCK 16 #18-50  
 BLOCK 18 #18-59 (mirrored)



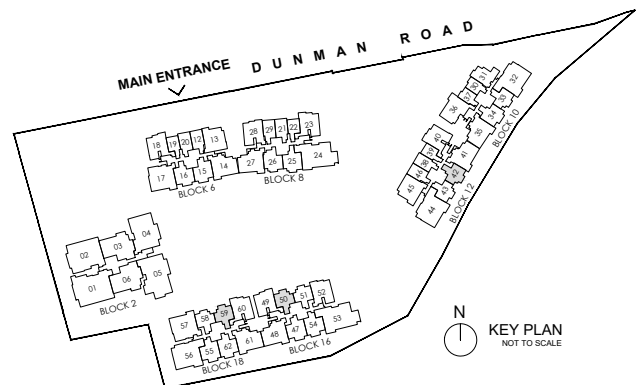
Dotted line denotes strata void complete with bulkhead at unit Type 2BR 1-H

### LEGEND:

- |    |                    |    |                                                 |
|----|--------------------|----|-------------------------------------------------|
| F  | FRIDGE             | AC | AIR-CONDITIONER                                 |
| WD | WASHER CUM DRYER   | RC | REINFORCED CONCRETE (EXCLUDED FROM STRATA AREA) |
| DB | DISTRIBUTION BOARD | ⊠  | VOID SPACE (EXCLUDED FROM STRATA AREA)          |
| ST | STORE              |    |                                                 |



ALL PLANS ARE SUBJECT TO CHANGES BY THE RELEVANT AUTHORITIES.  
 MEASUREMENTS ARE APPROXIMATE ONLY AND SUBJECT TO FINAL SURVEY.  
 INFORMATION ACCURATE AT POINT OF PRINTING.  
 BP NO.: A1716-00003-2022-BP01 DATED 15 MAY 2023



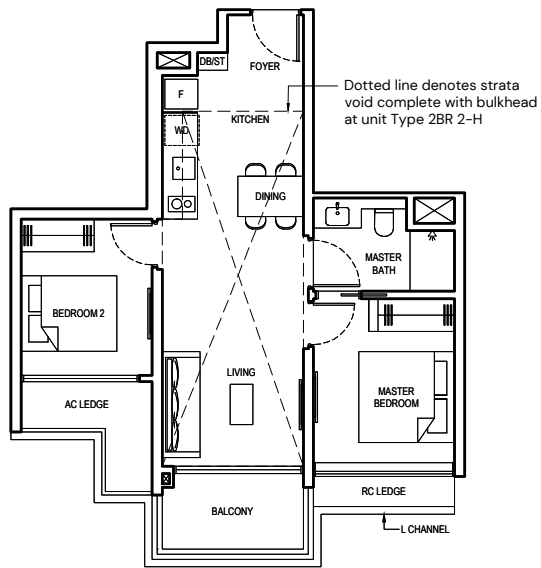
# 2 BEDROOM (LUXURY)

## TYPE 2BR 2

62 SQM/ 667 SQFT  
 (INCLUSIVE OF 5 SQM BALCONY & 4 SQM AC LEDGE)  
 BLOCK 10 #02-33 to #17-33  
 BLOCK 12 #02-43 to #17-43 (mirrored)  
 BLOCK 16 #02-51 to #17-51 (mirrored)  
 BLOCK 18 #02-58 to #17-58

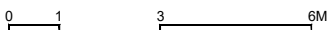
## TYPE 2BR 2-H

83 SQM/ 893 SQFT  
 (INCLUSIVE OF 5 SQM BALCONY,  
 4 SQM AC LEDGE & 21 SQM STRATA VOID)  
 BLOCK 16 #18-51 (mirrored)  
 BLOCK 18 #18-58

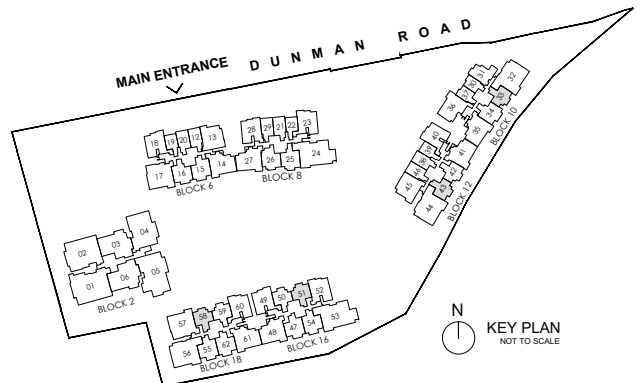


### LEGEND:

- |    |                    |    |                                                 |
|----|--------------------|----|-------------------------------------------------|
| F  | FRIDGE             | AC | AIR-CONDITIONER                                 |
| WD | WASHER CUM DRYER   | RC | REINFORCED CONCRETE (EXCLUDED FROM STRATA AREA) |
| DB | DISTRIBUTION BOARD | ⊠  | VOID SPACE (EXCLUDED FROM STRATA AREA)          |
| ST | STORE              |    |                                                 |



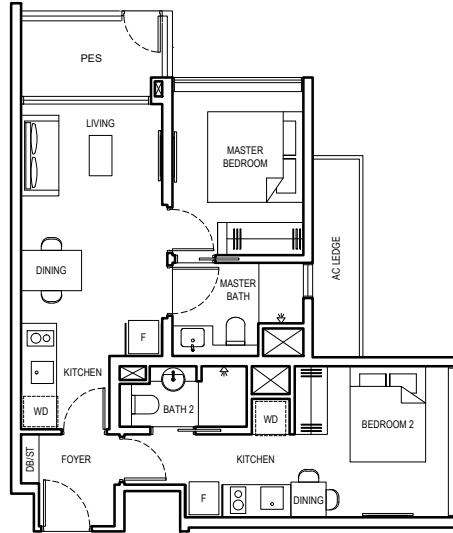
ALL PLANS ARE SUBJECT TO CHANGES BY THE RELEVANT AUTHORITIES.  
 MEASUREMENTS ARE APPROXIMATE ONLY AND SUBJECT TO FINAL SURVEY.  
 INFORMATION ACCURATE AT POINT OF PRINTING.  
 BP NO.: A1716-00003-2022-BP01 DATED 15 MAY 2023



# 2 BEDROOM DUAL KEY (LUXURY)

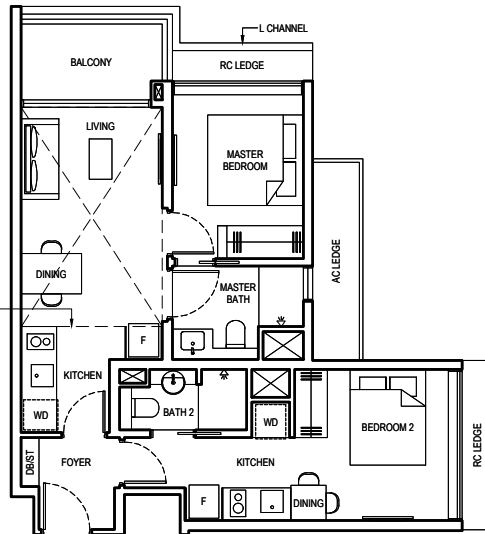
## TYPE 2BR DK1-PES

67 SQM/ 721 SQFT  
 (INCLUSIVE OF 5 SQM PES & 4 SQM AC LEDGE)  
 BLOCK 10 #01-31



## TYPE 2BR DK1

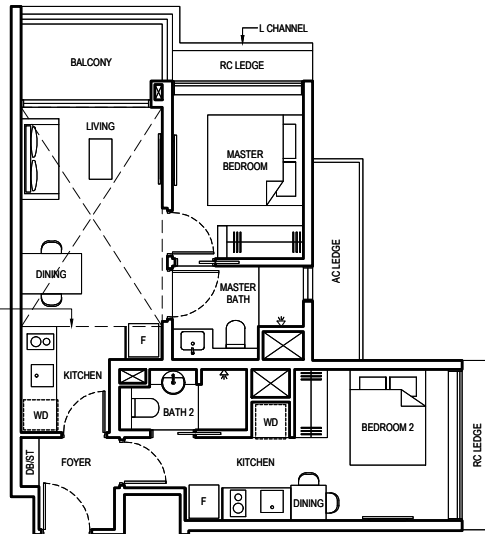
67 SQM/ 721 SQFT  
 (INCLUSIVE OF 5 SQM BALCONY & 4 SQM AC LEDGE)  
 BLOCK 10 #02-31 to #17-31



## TYPE 2BR DK1-H

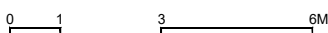
81 SQM/ 872 SQFT  
 (INCLUSIVE OF 5 SQM BALCONY,  
 4 SQM AC LEDGE & 14 SQM STRATA VOID)  
 BLOCK 10 #18-31

Dotted line denotes strata void complete with bulkhead at unit Type 2BR DK1-H

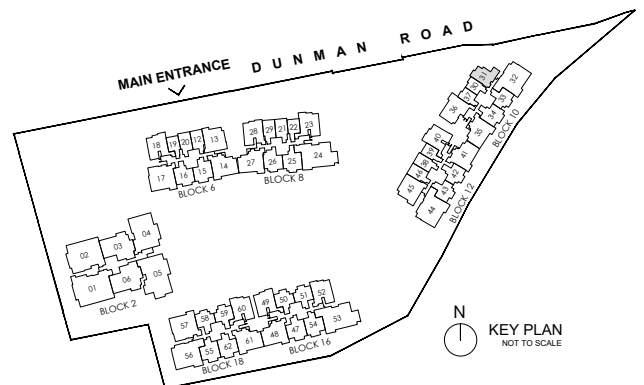


### LEGEND:

- |    |                    |    |                                                 |
|----|--------------------|----|-------------------------------------------------|
| F  | FRIDGE             | AC | AIR-CONDITIONER                                 |
| WD | WASHER CUM DRYER   | RC | REINFORCED CONCRETE (EXCLUDED FROM STRATA AREA) |
| DB | DISTRIBUTION BOARD | ⊠  | VOID SPACE (EXCLUDED FROM STRATA AREA)          |
| ST | STORE              |    |                                                 |



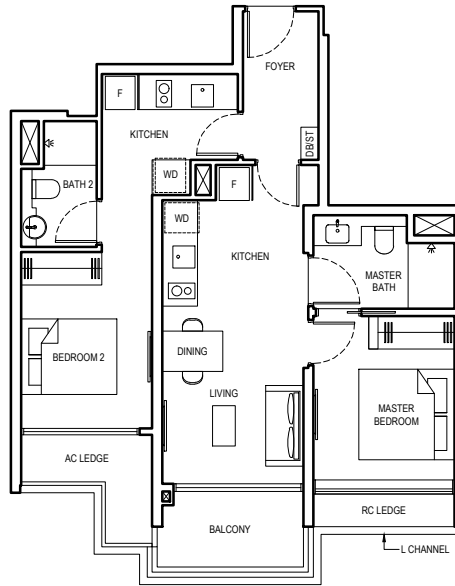
ALL PLANS ARE SUBJECT TO CHANGES BY THE RELEVANT AUTHORITIES.  
 MEASUREMENTS ARE APPROXIMATE ONLY AND SUBJECT TO FINAL SURVEY.  
 INFORMATION ACCURATE AT POINT OF PRINTING.  
 BP NO.: A1716-00003-2022-BP01 DATED 15 MAY 2023



# 2 BEDROOM DUAL KEY (LUXURY)

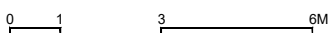
## TYPE 2BR DK2

72 SQM/ 775 SQFT  
 (INCLUSIVE OF 5 SQM BALCONY & 4 SQM AC LEDGE)  
 BLOCK 8 #02-26 to #17-26

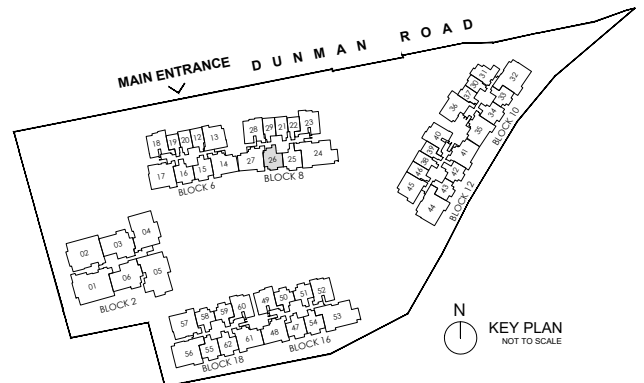


### LEGEND:

|    |                    |    |                                                 |
|----|--------------------|----|-------------------------------------------------|
| F  | FRIDGE             | AC | AIR-CONDITIONER                                 |
| WD | WASHER CUM DRYER   | RC | REINFORCED CONCRETE (EXCLUDED FROM STRATA AREA) |
| DB | DISTRIBUTION BOARD | ⊠  | VOID SPACE (EXCLUDED FROM STRATA AREA)          |
| ST | STORE              |    |                                                 |



ALL PLANS ARE SUBJECT TO CHANGES BY THE RELEVANT AUTHORITIES.  
 MEASUREMENTS ARE APPROXIMATE ONLY AND SUBJECT TO FINAL SURVEY.  
 INFORMATION ACCURATE AT POINT OF PRINTING.  
 BP NO.: A1716-00003-2022-BP01 DATED 15 MAY 2023



# 2 BEDROOM + STUDY (LUXURY)

## TYPE 2BR S1-PES

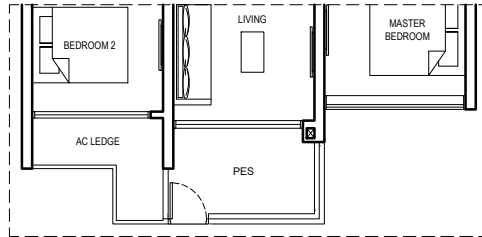
72 SQM/ 775 SQFT  
(INCLUSIVE OF 6 SQM PES & 4 SQM AC LEDGE)

BLOCK 16 #01-47 (mirrored)

#01-54

BLOCK 18 #01-55 (mirrored)

#01-62



## TYPE 2BR S1

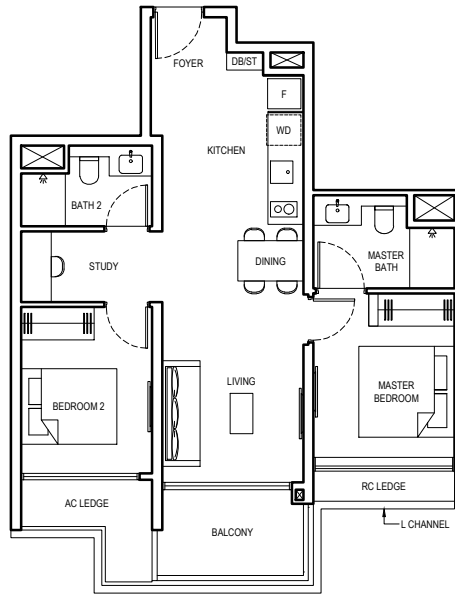
72 SQM/ 775 SQFT  
(INCLUSIVE OF 6 SQM BALCONY & 4 SQM AC LEDGE)

BLOCK 16 #02-47 to #17-47 (mirrored)

#02-54 to #17-54

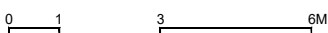
BLOCK 18 #02-55 to #17-55 (mirrored)

#02-62 to #17-62

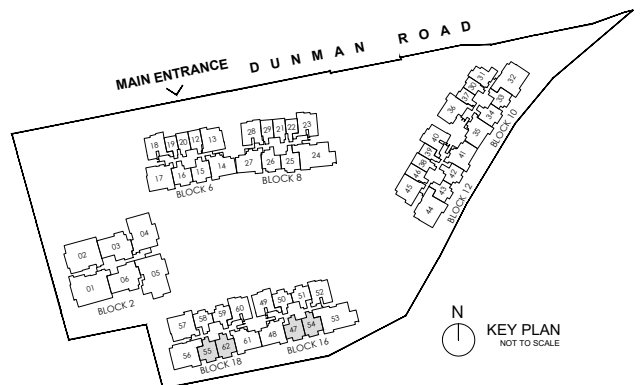


### LEGEND:

|    |                    |    |                                                 |
|----|--------------------|----|-------------------------------------------------|
| F  | FRIDGE             | AC | AIR-CONDITIONER                                 |
| WD | WASHER CUM DRYER   | RC | REINFORCED CONCRETE (EXCLUDED FROM STRATA AREA) |
| DB | DISTRIBUTION BOARD | ⊠  | VOID SPACE (EXCLUDED FROM STRATA AREA)          |
| ST | STORE              |    |                                                 |



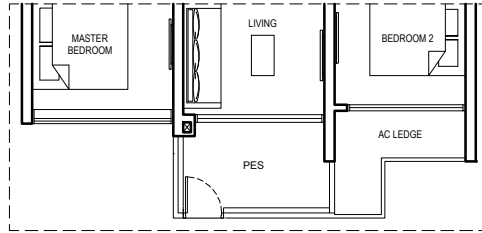
ALL PLANS ARE SUBJECT TO CHANGES BY THE RELEVANT AUTHORITIES.  
MEASUREMENTS ARE APPROXIMATE ONLY AND SUBJECT TO FINAL SURVEY.  
INFORMATION ACCURATE AT POINT OF PRINTING.  
BP NO.: A1716-00003-2022-BP01 DATED 15 MAY 2023



# 2 BEDROOM + STUDY (LUXURY)

## TYPE 2BR S2-PES

72 SQM/ 775 SQFT  
 (INCLUSIVE OF 6 SQM PES & 4 SQM AC LEDGE)  
 BLOCK 6 #01-16  
 BLOCK 10 #01-34

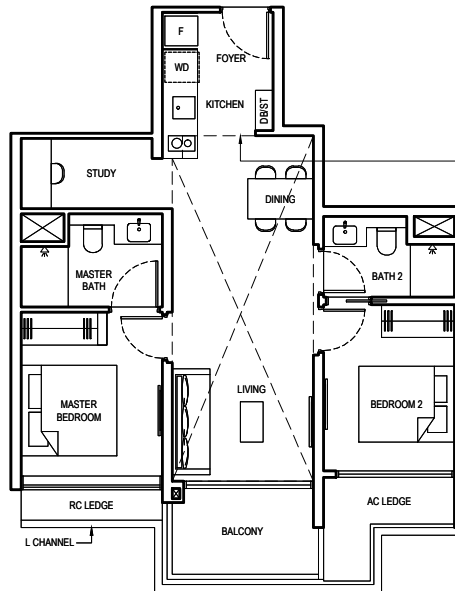


## TYPE 2BR S2

72 SQM/ 775 SQFT  
 (INCLUSIVE OF 6 SQM BALCONY & 4 SQM AC LEDGE)  
 BLOCK 6 #02-16 to #17-16  
 BLOCK 10 #02-34 to #17-34

## TYPE 2BR S2-H

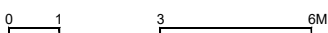
93 SQM/ 1001 SQFT  
 (INCLUSIVE OF 6 SQM BALCONY,  
 4 SQM AC LEDGE & 21 SQM STRATA VOID)  
 BLOCK 6 #18-16



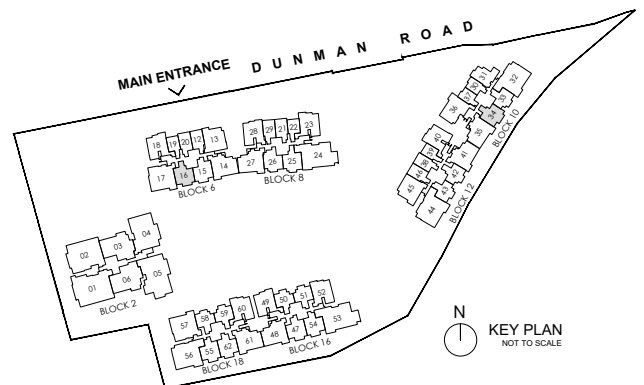
Dotted line denotes strata void complete with bulkhead at unit Type 2BR S2-H

### LEGEND:

- |    |                    |    |                                                 |
|----|--------------------|----|-------------------------------------------------|
| F  | FRIDGE             | AC | AIR-CONDITIONER                                 |
| WD | WASHER CUM DRYER   | RC | REINFORCED CONCRETE (EXCLUDED FROM STRATA AREA) |
| DB | DISTRIBUTION BOARD | ⊠  | VOID SPACE (EXCLUDED FROM STRATA AREA)          |
| ST | STORE              |    |                                                 |



ALL PLANS ARE SUBJECT TO CHANGES BY THE RELEVANT AUTHORITIES.  
 MEASUREMENTS ARE APPROXIMATE ONLY AND SUBJECT TO FINAL SURVEY.  
 INFORMATION ACCURATE AT POINT OF PRINTING.  
 BP NO.: A1716-00003-2022-BP01 DATED 15 MAY 2023



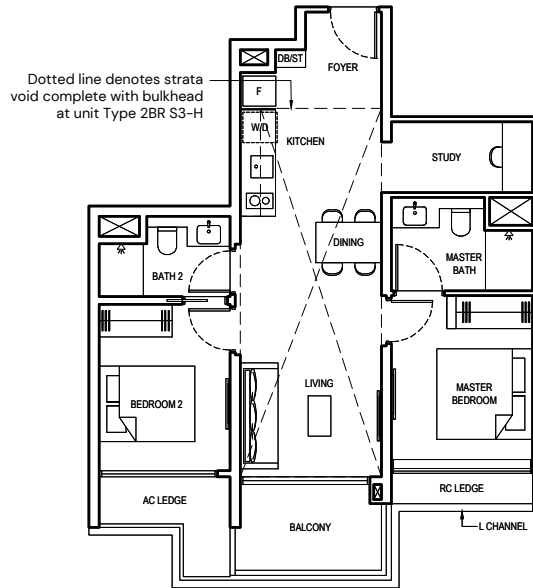
# 2 BEDROOM + STUDY (LUXURY)

## TYPE 2BR S3

72 SQM/ 775 SQFT  
 (INCLUSIVE OF 6 SQM BALCONY & 4 SQM AC LEDGE)  
 BLOCK 6 #02-15 to #17-15

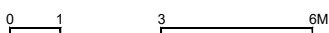
## TYPE 2BR S3-H

94 SQM/ 1012 SQFT  
 (INCLUSIVE OF 6 SQM BALCONY,  
 4 SQM AC LEDGE & 22 SQM STRATA VOID)  
 BLOCK 6 #18-15

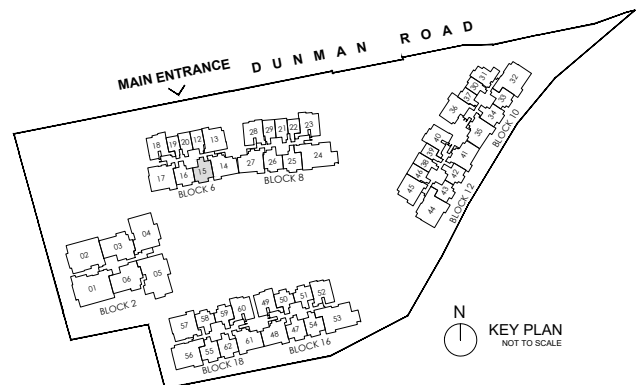


### LEGEND:

- |    |                    |    |                                                 |
|----|--------------------|----|-------------------------------------------------|
| F  | FRIDGE             | AC | AIR-CONDITIONER                                 |
| WD | WASHER CUM DRYER   | RC | REINFORCED CONCRETE (EXCLUDED FROM STRATA AREA) |
| DB | DISTRIBUTION BOARD | ⊠  | VOID SPACE (EXCLUDED FROM STRATA AREA)          |
| ST | STORE              |    |                                                 |



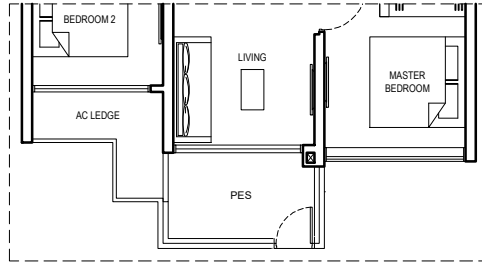
ALL PLANS ARE SUBJECT TO CHANGES BY THE RELEVANT AUTHORITIES.  
 MEASUREMENTS ARE APPROXIMATE ONLY AND SUBJECT TO FINAL SURVEY.  
 INFORMATION ACCURATE AT POINT OF PRINTING.  
 BP NO.: A1716-00003-2022-BP01 DATED 15 MAY 2023



# 2 BEDROOM + STUDY (LUXURY)

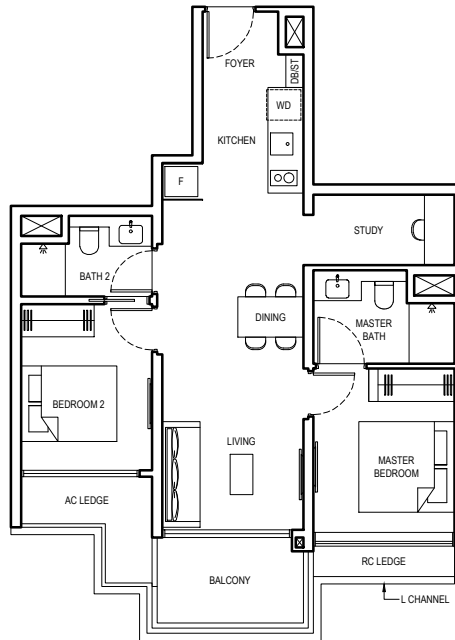
## TYPE 2BR S4-PES

74 SQM/ 797 SQFT  
 (INCLUSIVE OF 6 SQM PES & 4 SQM AC LEDGE)  
 BLOCK 8 #01-25



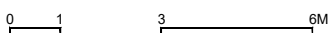
## TYPE 2BR S4

74 SQM/ 797 SQFT  
 (INCLUSIVE OF 6 SQM BALCONY & 4 SQM AC LEDGE)  
 BLOCK 8 #02-25 to #17-25

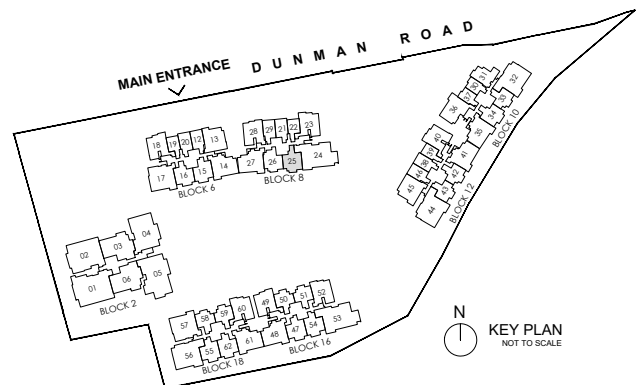


### LEGEND:

- |    |                    |    |                                                 |
|----|--------------------|----|-------------------------------------------------|
| F  | FRIDGE             | AC | AIR-CONDITIONER                                 |
| WD | WASHER CUM DRYER   | RC | REINFORCED CONCRETE (EXCLUDED FROM STRATA AREA) |
| DB | DISTRIBUTION BOARD | ⊠  | VOID SPACE (EXCLUDED FROM STRATA AREA)          |
| ST | STORE              |    |                                                 |



ALL PLANS ARE SUBJECT TO CHANGES BY THE RELEVANT AUTHORITIES.  
 MEASUREMENTS ARE APPROXIMATE ONLY AND SUBJECT TO FINAL SURVEY.  
 INFORMATION ACCURATE AT POINT OF PRINTING.  
 BP NO.: A1716-00003-2022-BP01 DATED 15 MAY 2023

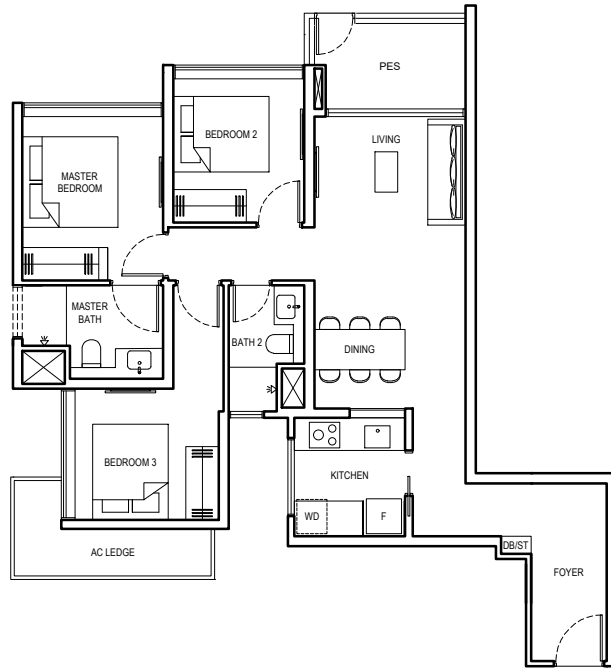




# 3 BEDROOM (LUXURY)

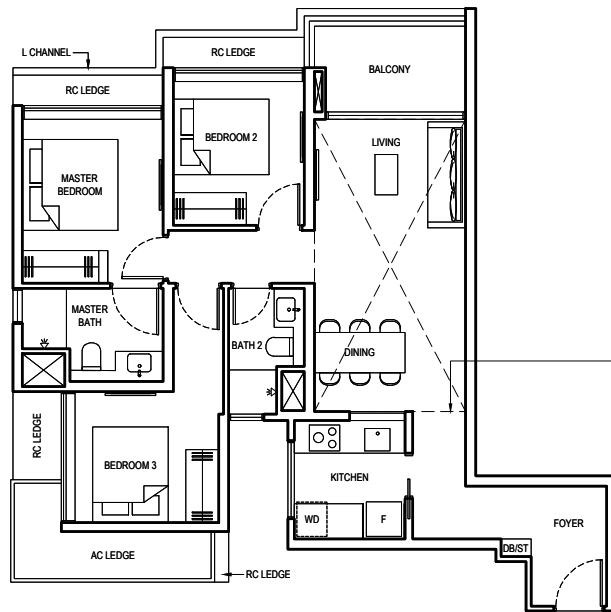
## TYPE 3BR 1-PES

91 SQM/ 980 SQFT  
 (INCLUSIVE OF 6 SQM PES & 5 SQM AC LEDGE)  
 BLOCK 6 #01-18  
 BLOCK 8 #01-23 (mirrored)  
 BLOCK 12 #01-40 (mirrored)  
 BLOCK 16 #01-49  
 BLOCK 18 #01-60 (mirrored)



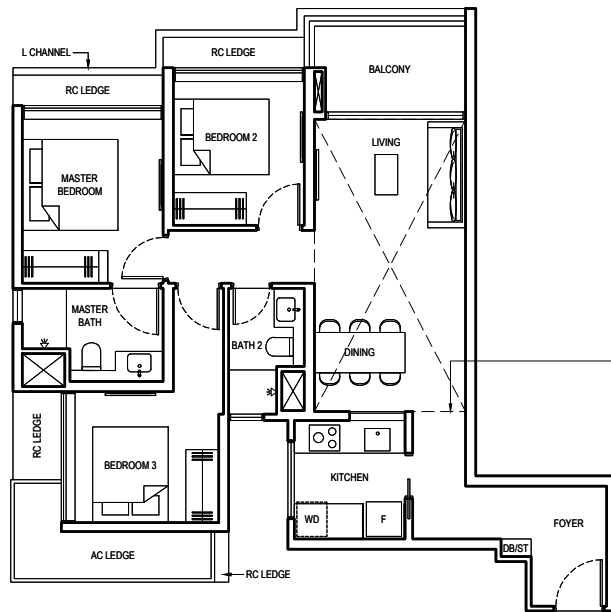
## TYPE 3BR 1

89 SQM/ 958 SQFT  
 (INCLUSIVE OF 6 SQM BALCONY & 5 SQM AC LEDGE)  
 BLOCK 6 #02-18 to #17-18  
 BLOCK 8 #02-23 to #17-23 (mirrored)  
 BLOCK 12 #02-40 to #17-40 (mirrored)  
 BLOCK 16 #02-49 to #17-49  
 BLOCK 18 #02-60 to #17-60 (mirrored)



## TYPE 3BR 1-H

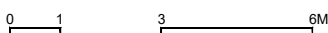
108 SQM/ 1163 SQFT  
 (INCLUSIVE OF 6 SQM BALCONY,  
 5 SQM AC LEDGE & 19 SQM STRATA VOID)  
 BLOCK 6 #18-18  
 BLOCK 8 #18-23 (mirrored)  
 BLOCK 12 #18-40 (mirrored)  
 BLOCK 16 #18-49  
 BLOCK 18 #18-60 (mirrored)



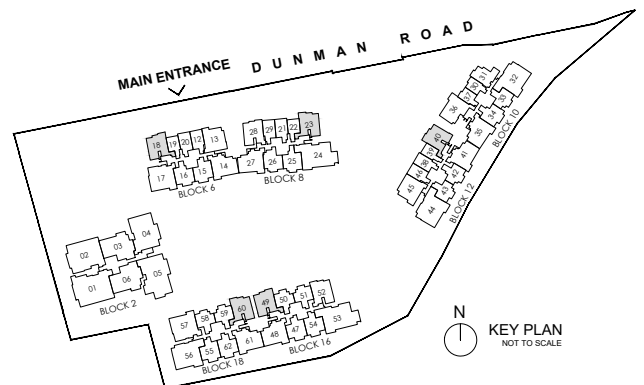
Dotted line denotes strata void complete with bulkhead at unit Type 3BR 1-H

### LEGEND:

- |    |                    |    |                                                 |
|----|--------------------|----|-------------------------------------------------|
| F  | FRIDGE             | AC | AIR-CONDITIONER                                 |
| WD | WASHER CUM DRYER   | RC | REINFORCED CONCRETE (EXCLUDED FROM STRATA AREA) |
| DB | DISTRIBUTION BOARD | ⊠  | VOID SPACE (EXCLUDED FROM STRATA AREA)          |
| ST | STORE              |    |                                                 |



ALL PLANS ARE SUBJECT TO CHANGES BY THE RELEVANT AUTHORITIES.  
 MEASUREMENTS ARE APPROXIMATE ONLY AND SUBJECT TO FINAL SURVEY.  
 INFORMATION ACCURATE AT POINT OF PRINTING.  
 BP NO.: A1716-00003-2022-BP01 DATED 15 MAY 2023

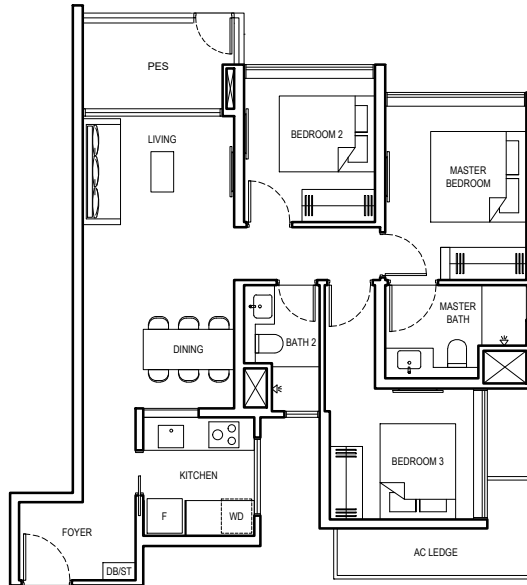


N  
 KEY PLAN  
 NOT TO SCALE

# 3 BEDROOM (LUXURY)

## TYPE 3BR 2-PES

87 SQM/ 936 SQFT  
(INCLUSIVE OF 6 SQM PES & 5 SQM AC LEDGE)  
BLOCK 16 #01-52



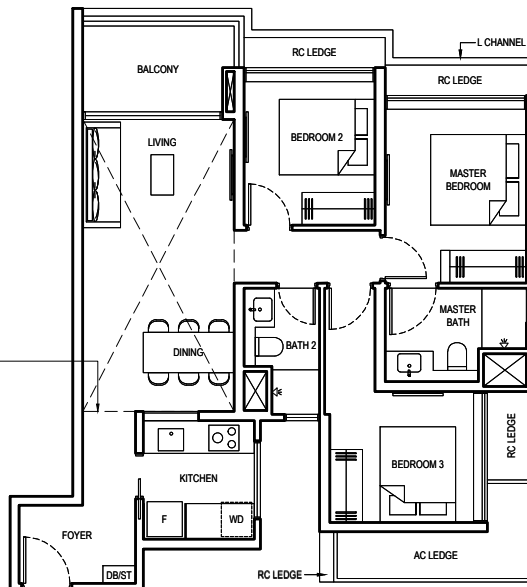
## TYPE 3BR 2

87 SQM/ 936 SQFT  
(INCLUSIVE OF 6 SQM BALCONY & 5 SQM AC LEDGE)  
BLOCK 16 #02-52 to #17-52

## TYPE 3BR 2-H

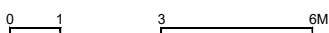
106 SQM/ 1141 SQFT  
(INCLUSIVE OF 6 SQM BALCONY,  
5 SQM AC LEDGE & 19 SQM STRATA VOID)  
BLOCK 16 #18-52

Dotted line denotes strata void complete with bulkhead at unit Type 3BR 2-H

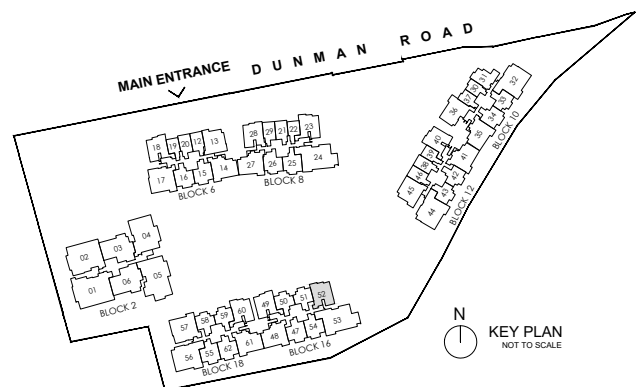


### LEGEND:

|    |                    |    |                                                 |
|----|--------------------|----|-------------------------------------------------|
| F  | FRIDGE             | AC | AIR-CONDITIONER                                 |
| WD | WASHER CUM DRYER   | RC | REINFORCED CONCRETE (EXCLUDED FROM STRATA AREA) |
| DB | DISTRIBUTION BOARD | ⊠  | VOID SPACE (EXCLUDED FROM STRATA AREA)          |
| ST | STORE              |    |                                                 |



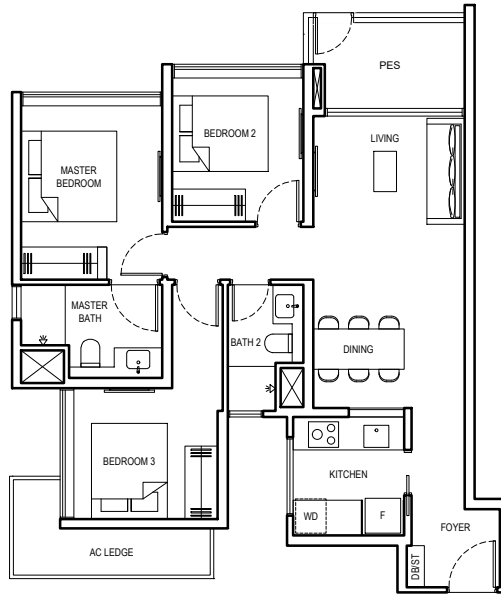
ALL PLANS ARE SUBJECT TO CHANGES BY THE RELEVANT AUTHORITIES.  
MEASUREMENTS ARE APPROXIMATE ONLY AND SUBJECT TO FINAL SURVEY.  
INFORMATION ACCURATE AT POINT OF PRINTING.  
BP NO.: A1716-00003-2022-BP01 DATED 15 MAY 2023



# 3 BEDROOM (LUXURY)

## TYPE 3BR 3-PES

86 SQM/ 926 SQFT  
(INCLUSIVE OF 6 SQM PES & 5 SQM AC LEDGE)  
BLOCK 8 #01-28

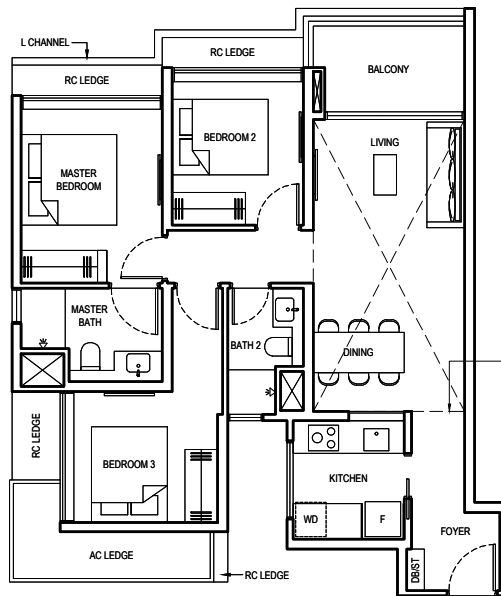


## TYPE 3BR 3

86 SQM/ 926 SQFT  
(INCLUSIVE OF 6 SQM BALCONY & 5 SQM AC LEDGE)  
BLOCK 8 #02-28 to #17-28

## TYPE 3BR 3-H

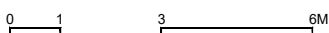
105 SQM/ 1130 SQFT  
(INCLUSIVE OF 6 SQM BALCONY,  
5 SQM AC LEDGE & 19 SQM STRATA VOID)  
BLOCK 8 #18-28



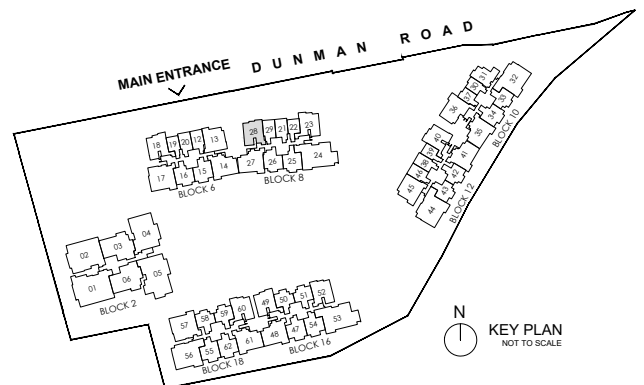
Dotted line denotes strata void complete with bulkhead at unit Type 3BR 3-H

### LEGEND:

- |    |                    |    |                                                 |
|----|--------------------|----|-------------------------------------------------|
| F  | FRIDGE             | AC | AIR-CONDITIONER                                 |
| WD | WASHER CUM DRYER   | RC | REINFORCED CONCRETE (EXCLUDED FROM STRATA AREA) |
| DB | DISTRIBUTION BOARD | ⊠  | VOID SPACE (EXCLUDED FROM STRATA AREA)          |
| ST | STORE              |    |                                                 |



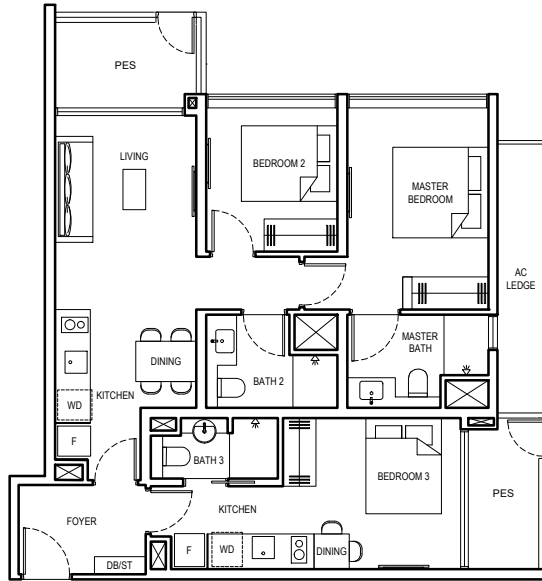
ALL PLANS ARE SUBJECT TO CHANGES BY THE RELEVANT AUTHORITIES.  
MEASUREMENTS ARE APPROXIMATE ONLY AND SUBJECT TO FINAL SURVEY.  
INFORMATION ACCURATE AT POINT OF PRINTING.  
BP NO.: A1716-00003-2022-BP01 DATED 15 MAY 2023



# 3 BEDROOM DUAL KEY (LUXURY)

## TYPE 3BR DK1-PES

97 SQM/ 1044 SQFT  
 (INCLUSIVE OF 11 SQM PES & 6 SQM AC LEDGE)  
 BLOCK 6 #01-13

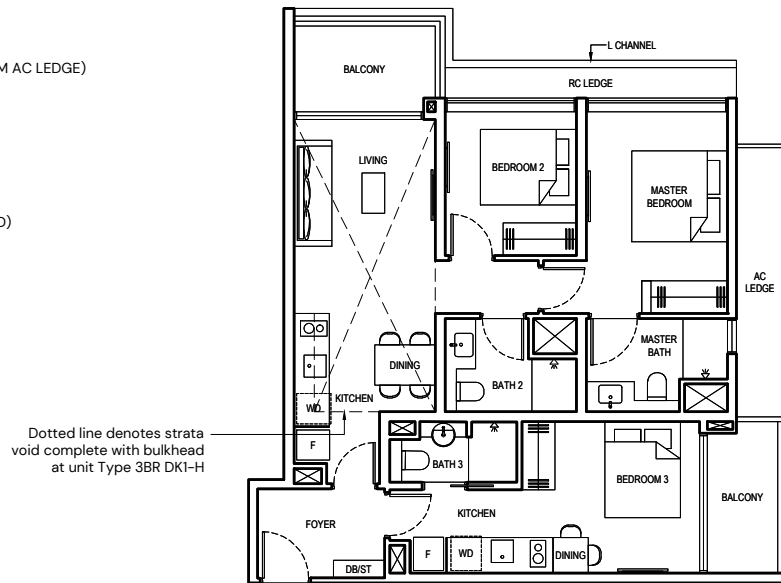


## TYPE 3BR DK1

97 SQM/ 1044 SQFT  
 (INCLUSIVE OF 11 SQM BALCONY & 6 SQM AC LEDGE)  
 BLOCK 6 #02-13 to #17-13

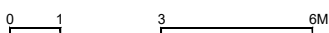
## TYPE 3BR DK1-H

114 SQM/ 1227 SQFT  
 (INCLUSIVE OF 11 SQM BALCONY,  
 6 SQM AC LEDGE & 17 SQM STRATA VOID)  
 BLOCK 6 #18-13

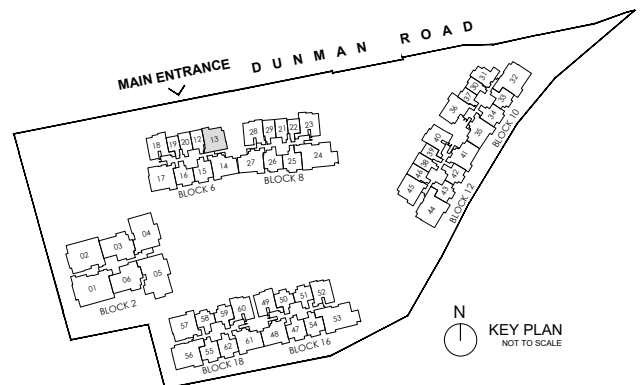


### LEGEND:

- |    |                    |    |                                                 |
|----|--------------------|----|-------------------------------------------------|
| F  | FRIDGE             | AC | AIR-CONDITIONER                                 |
| WD | WASHER CUM DRYER   | RC | REINFORCED CONCRETE (EXCLUDED FROM STRATA AREA) |
| DB | DISTRIBUTION BOARD | ⊠  | VOID SPACE (EXCLUDED FROM STRATA AREA)          |
| ST | STORE              |    |                                                 |



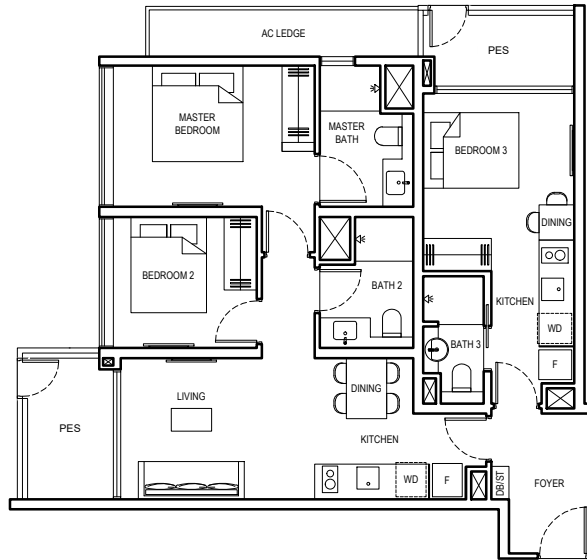
ALL PLANS ARE SUBJECT TO CHANGES BY THE RELEVANT AUTHORITIES.  
 MEASUREMENTS ARE APPROXIMATE ONLY AND SUBJECT TO FINAL SURVEY.  
 INFORMATION ACCURATE AT POINT OF PRINTING.  
 BP NO.: A1716-00003-2022-BP01 DATED 15 MAY 2023



# 3 BEDROOM DUAL KEY (LUXURY)

## TYPE 3BR DK2-PES

98 SQM/ 1055 SQFT  
(INCLUSIVE OF 11 SQM PES & 6 SQM AC LEDGE)  
BLOCK 12 #01-45

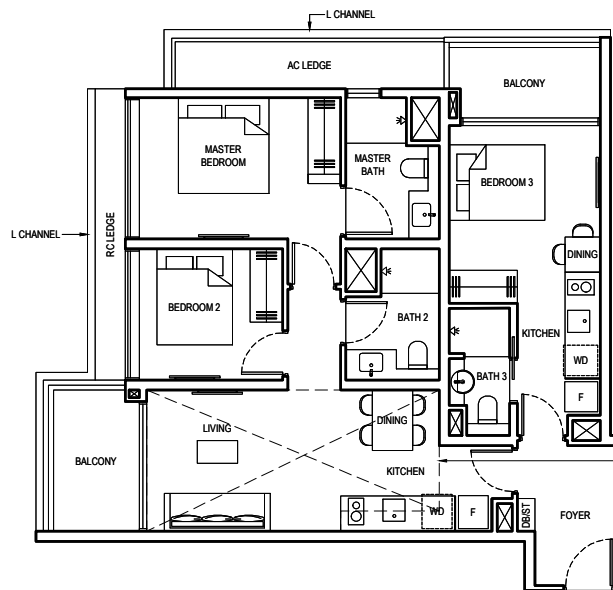


## TYPE 3BR DK2

98 SQM/ 1055 SQFT  
(INCLUSIVE OF 11 SQM BALCONY & 6 SQM AC LEDGE)  
BLOCK 12 #02-45 to #17-45

## TYPE 3BR DK2-H

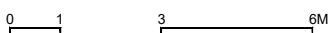
115 SQM/ 1238 SQFT  
(INCLUSIVE OF 11 SQM BALCONY,  
6 SQM AC LEDGE & 7 SQM STRATA VOID)  
BLOCK 12 #18-45



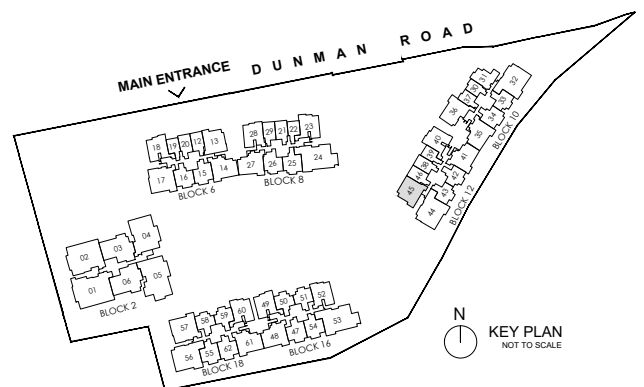
Dotted line denotes strata void complete with bulkhead at unit Type 3BR DK2-H

### LEGEND:

|    |                    |    |                                                 |
|----|--------------------|----|-------------------------------------------------|
| F  | FRIDGE             | AC | AIR-CONDITIONER                                 |
| WD | WASHER CUM DRYER   | RC | REINFORCED CONCRETE (EXCLUDED FROM STRATA AREA) |
| DB | DISTRIBUTION BOARD | ⊠  | VOID SPACE (EXCLUDED FROM STRATA AREA)          |
| ST | STORE              |    |                                                 |



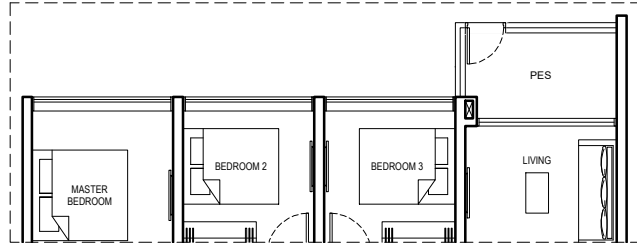
ALL PLANS ARE SUBJECT TO CHANGES BY THE RELEVANT AUTHORITIES.  
MEASUREMENTS ARE APPROXIMATE ONLY AND SUBJECT TO FINAL SURVEY.  
INFORMATION ACCURATE AT POINT OF PRINTING.  
BP NO.: A1716-00003-2022-BP01 DATED 15 MAY 2023



# 3 BEDROOM FLEX (LUXURY)

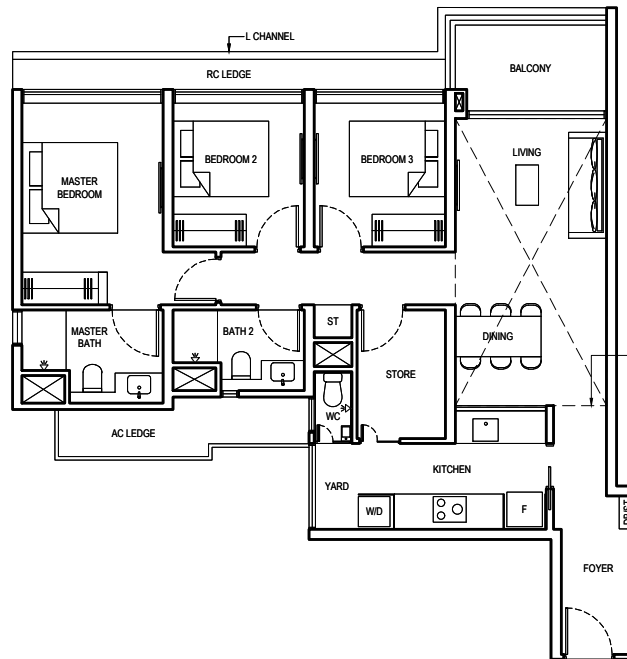
## TYPE 3BR FLEX-PES

102 SQM/ 1098 SQFT  
 (INCLUSIVE OF 6 SQM PES & 6 SQM AC LEDGE)  
 BLOCK 10 #01-36



## TYPE 3BR FLEX

102 SQM/ 1098 SQFT  
 (INCLUSIVE OF 6 SQM BALCONY & 6 SQM AC LEDGE)  
 BLOCK 10 #02-36 to #17-36



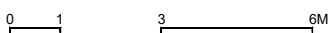
Dotted line denotes strata void complete with bulkhead at unit Type 3BR FLEX-H

## TYPE 3BR FLEX-H

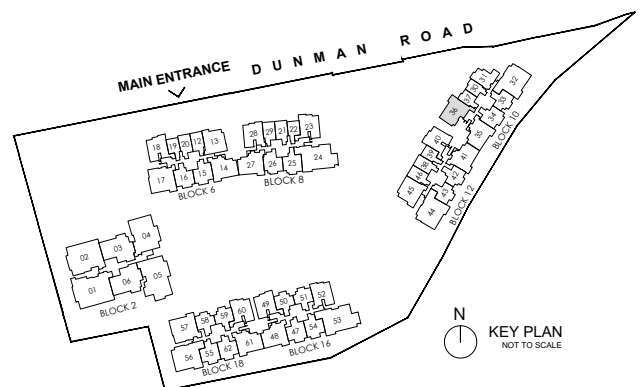
121 SQM/ 1302 SQFT  
 (INCLUSIVE OF 6 SQM BALCONY,  
 6 SQM AC LEDGE & 19 SQM STRATA VOID)  
 BLOCK 10 #18-36

### LEGEND:

- |     |                    |    |                                                 |
|-----|--------------------|----|-------------------------------------------------|
| F   | FRIDGE             | AC | AIR-CONDITIONER                                 |
| W/D | WASHER AND DRYER   | RC | REINFORCED CONCRETE (EXCLUDED FROM STRATA AREA) |
| DB  | DISTRIBUTION BOARD | ⊠  | VOID SPACE (EXCLUDED FROM STRATA AREA)          |
| ST  | STORE              |    |                                                 |
| WC  | WATER CLOSET       |    |                                                 |



ALL PLANS ARE SUBJECT TO CHANGES BY THE RELEVANT AUTHORITIES.  
 MEASUREMENTS ARE APPROXIMATE ONLY AND SUBJECT TO FINAL SURVEY.  
 INFORMATION ACCURATE AT POINT OF PRINTING.  
 BP NO.: A1716-00003-2022-BP01 DATED 15 MAY 2023



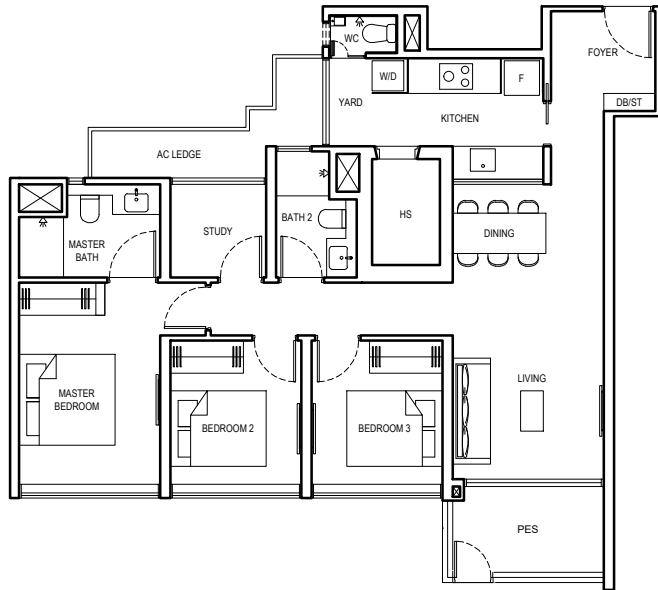
N  
 KEY PLAN  
 NOT TO SCALE

# 3 BEDROOM + STUDY (LUXURY)

## TYPE 3BR LS-PES

104 SQM/ 1119 SQFT  
(INCLUSIVE OF 6 SQM PES & 6 SQM AC LEDGE)

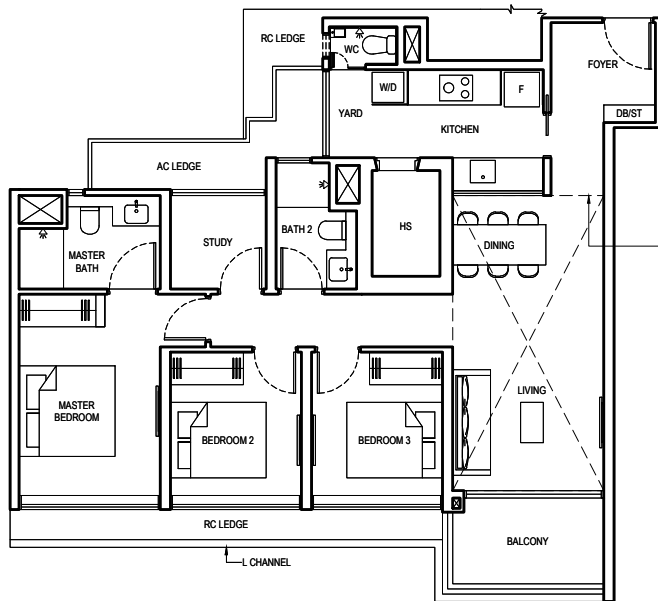
- BLOCK 6 #01-14 (mirrored)
- BLOCK 8 #01-27
- BLOCK 10 #01-35
- BLOCK 12 #01-41 (mirrored)
- BLOCK 16 #01-48
- BLOCK 18 #01-61 (mirrored)



## TYPE 3BR LS

104 SQM/ 1119 SQFT  
(INCLUSIVE OF 6 SQM BALCONY & 6 SQM AC LEDGE)

- BLOCK 6 #02-14 to #17-14 (mirrored)
- BLOCK 8 #02-27 to #17-27
- BLOCK 10 #02-35 to #17-35
- BLOCK 12 #02-41 to #17-41 (mirrored)
- BLOCK 16 #02-48 to #17-48
- BLOCK 18 #02-61 to #17-61 (mirrored)



Dotted line denotes strata void complete with bulkhead at unit Type 3BR LS-H

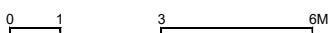
## TYPE 3BR LS-H

124 SQM/ 1335 SQFT  
(INCLUSIVE OF 6 SQM BALCONY,  
6 SQM AC LEDGE & 20 SQM STRATA VOID)

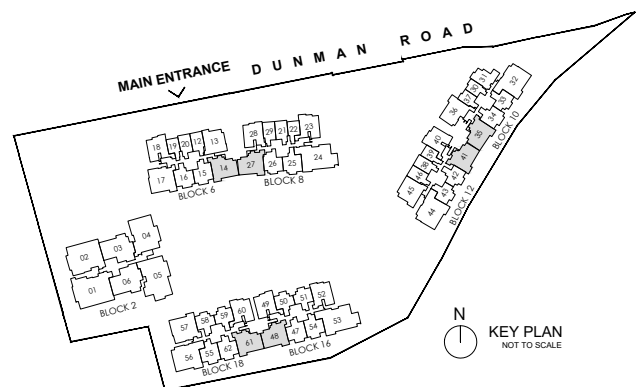
- BLOCK 6 #18-14 (mirrored)

### LEGEND:

- |     |                    |    |                                                 |
|-----|--------------------|----|-------------------------------------------------|
| F   | FRIDGE             | HS | HOUSEHOLD SHELTER                               |
| W/D | WASHER AND DRYER   | AC | AIR-CONDITIONER                                 |
| DB  | DISTRIBUTION BOARD | RC | REINFORCED CONCRETE (EXCLUDED FROM STRATA AREA) |
| ST  | STORE              | ⊠  | VOID SPACE (EXCLUDED FROM STRATA AREA)          |
| WC  | WATER CLOSET       |    |                                                 |



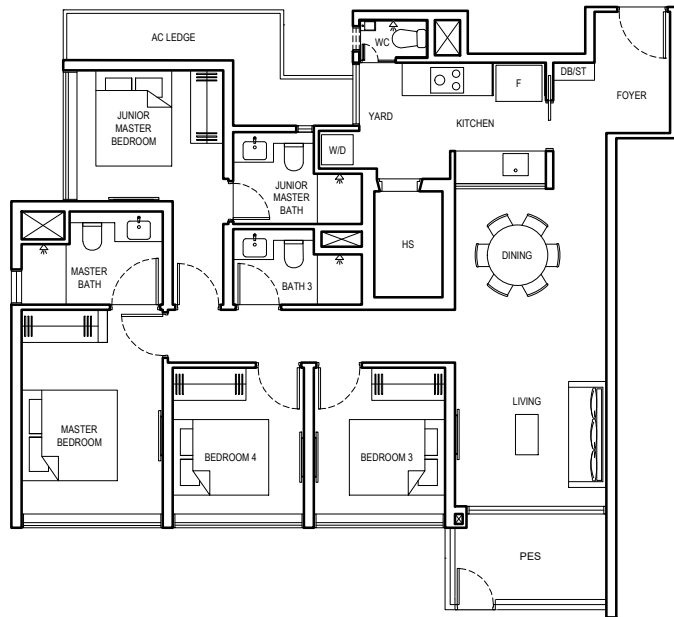
ALL PLANS ARE SUBJECT TO CHANGES BY THE RELEVANT AUTHORITIES.  
MEASUREMENTS ARE APPROXIMATE ONLY AND SUBJECT TO FINAL SURVEY.  
INFORMATION ACCURATE AT POINT OF PRINTING.  
BP NO.: A1716-00003-2022-BP01 DATED 15 MAY 2023



# 4 BEDROOM (LUXURY)

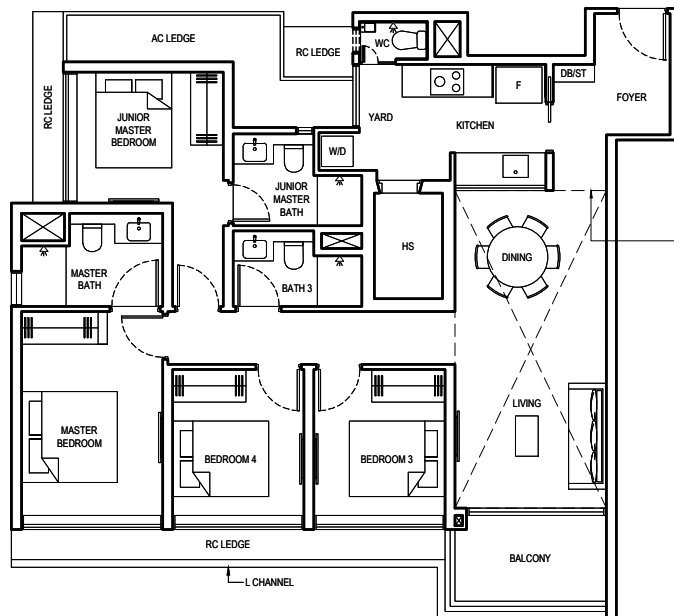
## TYPE 4BR-PES

120 SQM/ 1292 SQFT  
 (INCLUSIVE OF 6 SQM PES & 8 SQM AC LEDGE)  
 BLOCK 6 #01-17  
 BLOCK 18 #01-57 (mirrored)



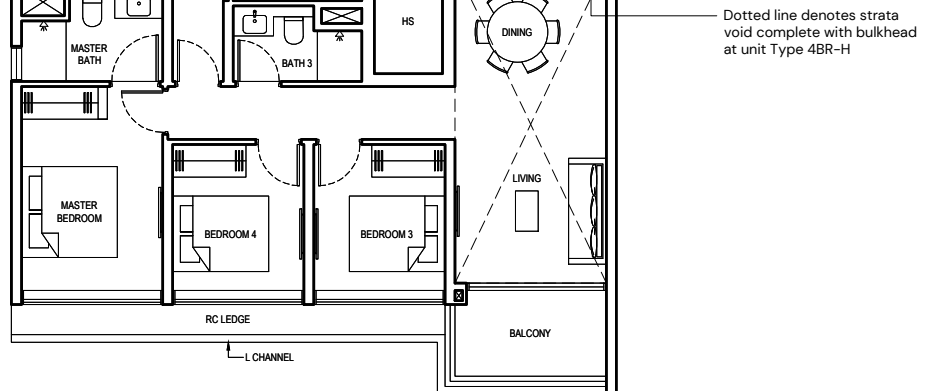
## TYPE 4BR

120 SQM/ 1292 SQFT  
 (INCLUSIVE OF 6 SQM BALCONY & 8 SQM AC LEDGE)  
 BLOCK 6 #02-17 to #17-17  
 BLOCK 18 #02-57 to #17-57 (mirrored)



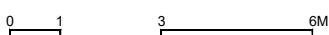
## TYPE 4BR-H

141 SQM/ 1518 SQFT  
 (INCLUSIVE OF 6 SQM BALCONY,  
 8 SQM AC LEDGE & 21 SQM STRATA VOID)  
 BLOCK 6 #18-17  
 BLOCK 18 #18-57 (mirrored)

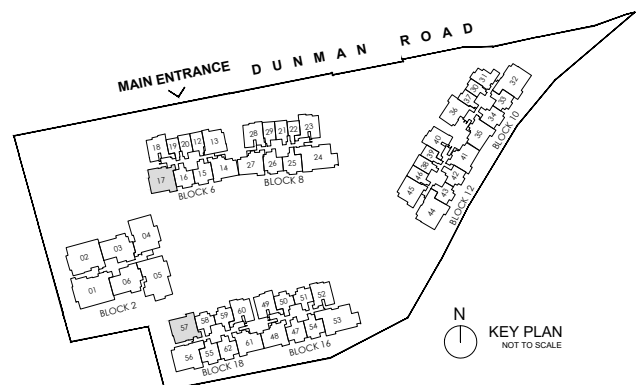


### LEGEND:

|     |                    |    |                                                 |
|-----|--------------------|----|-------------------------------------------------|
| F   | FRIDGE             | HS | HOUSEHOLD SHELTER                               |
| W/D | WASHER AND DRYER   | AC | AIR-CONDITIONER                                 |
| DB  | DISTRIBUTION BOARD | RC | REINFORCED CONCRETE (EXCLUDED FROM STRATA AREA) |
| ST  | STORE              | ☒  | VOID SPACE (EXCLUDED FROM STRATA AREA)          |
| WC  | WATER CLOSET       |    |                                                 |



ALL PLANS ARE SUBJECT TO CHANGES BY THE RELEVANT AUTHORITIES.  
 MEASUREMENTS ARE APPROXIMATE ONLY AND SUBJECT TO FINAL SURVEY.  
 INFORMATION ACCURATE AT POINT OF PRINTING.  
 BP NO.: A1716-00003-2022-BP01 DATED 15 MAY 2023

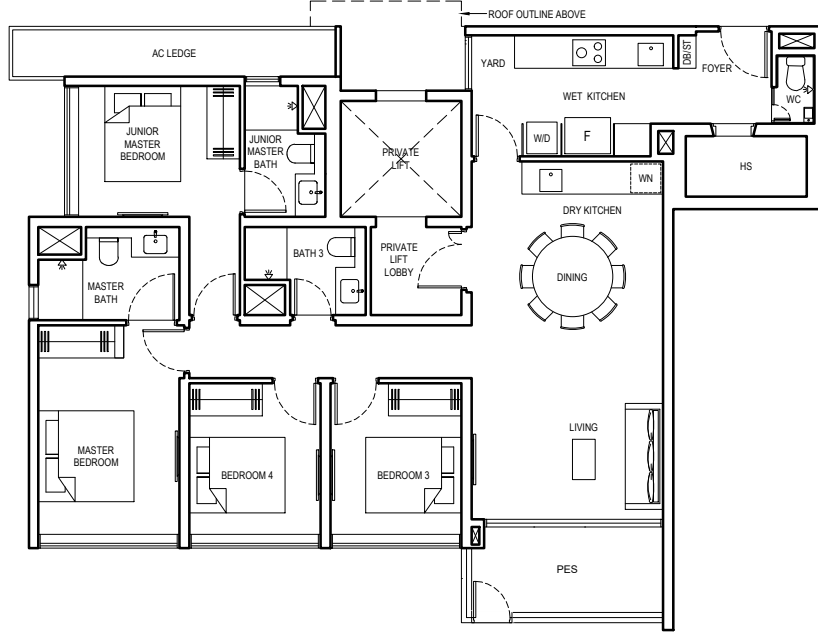




# 4 BEDROOM (LUXURY)

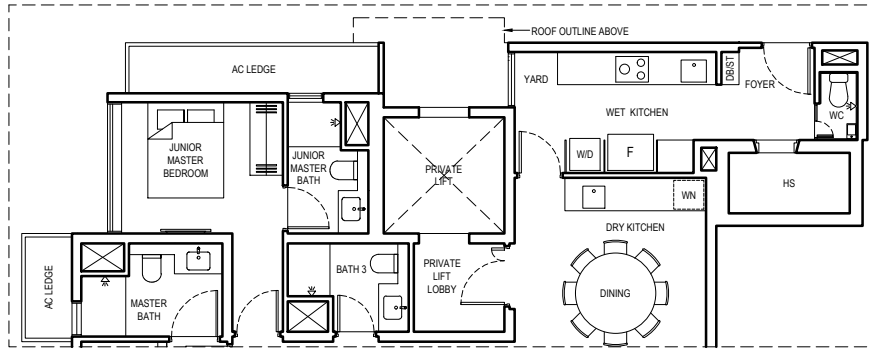
## TYPE 4BR L-PES1

132 SQM/ 1421 SQFT  
 (INCLUSIVE OF 8 SQM PES, 7 SQM AC LEDGE  
 & 4 SQM PRIVATE LIFT LOBBY)  
 BLOCK 12 #01-44  
 BLOCK 18 #01-56



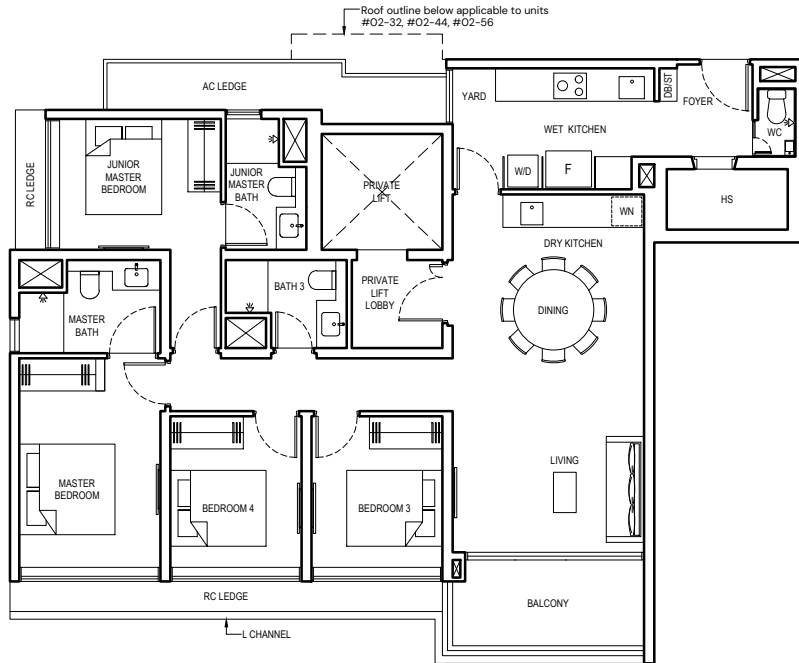
## TYPE 4BR L-PES2

133 SQM/ 1432 SQFT  
 (INCLUSIVE OF 8 SQM PES, 8 SQM AC LEDGE  
 & 4 SQM PRIVATE LIFT LOBBY)  
 BLOCK 10 #01-32 (mirrored)



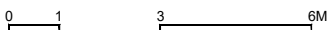
## TYPE 4BR L

133 SQM/ 1432 SQFT  
 (INCLUSIVE OF 8 SQM BALCONY, 8 SQM AC LEDGE  
 & 4 SQM PRIVATE LIFT LOBBY)  
 BLOCK 10 #02-32 to #17-32 (mirrored)  
 BLOCK 12 #02-44 to #17-44  
 BLOCK 18 #02-56 to #17-56

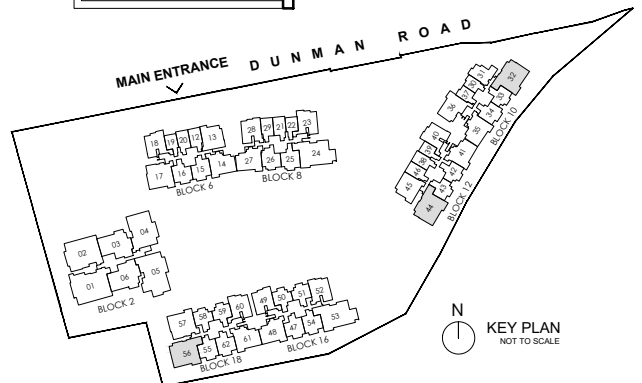


### LEGEND:

- |     |                    |    |                                                 |
|-----|--------------------|----|-------------------------------------------------|
| F   | FRIDGE             | HS | HOUSEHOLD SHELTER                               |
| W/D | WASHER AND DRYER   | WN | WINE CHILLER                                    |
| DB  | DISTRIBUTION BOARD | AC | AIR-CONDITIONER                                 |
| ST  | STORE              | RC | REINFORCED CONCRETE (EXCLUDED FROM STRATA AREA) |
| WC  | WATER CLOSET       | ⊠  | VOID SPACE (EXCLUDED FROM STRATA AREA)          |



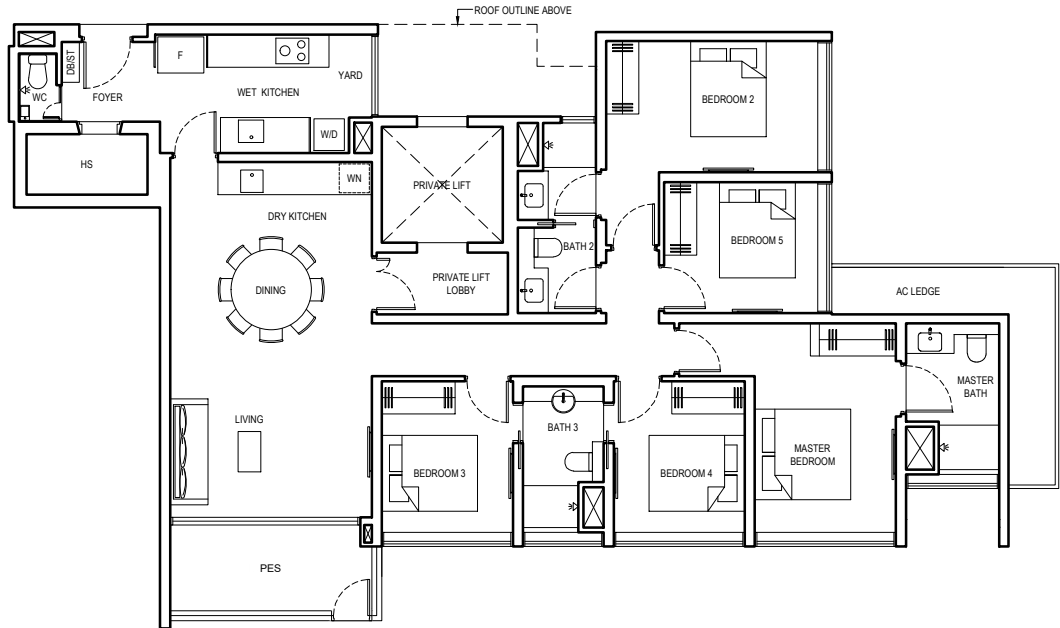
ALL PLANS ARE SUBJECT TO CHANGES BY THE RELEVANT AUTHORITIES.  
 MEASUREMENTS ARE APPROXIMATE ONLY AND SUBJECT TO FINAL SURVEY.  
 INFORMATION ACCURATE AT POINT OF PRINTING.  
 BP NO.: A1716-00003-2022-BP01 DATED 15 MAY 2023



# 5 BEDROOM (LUXURY)

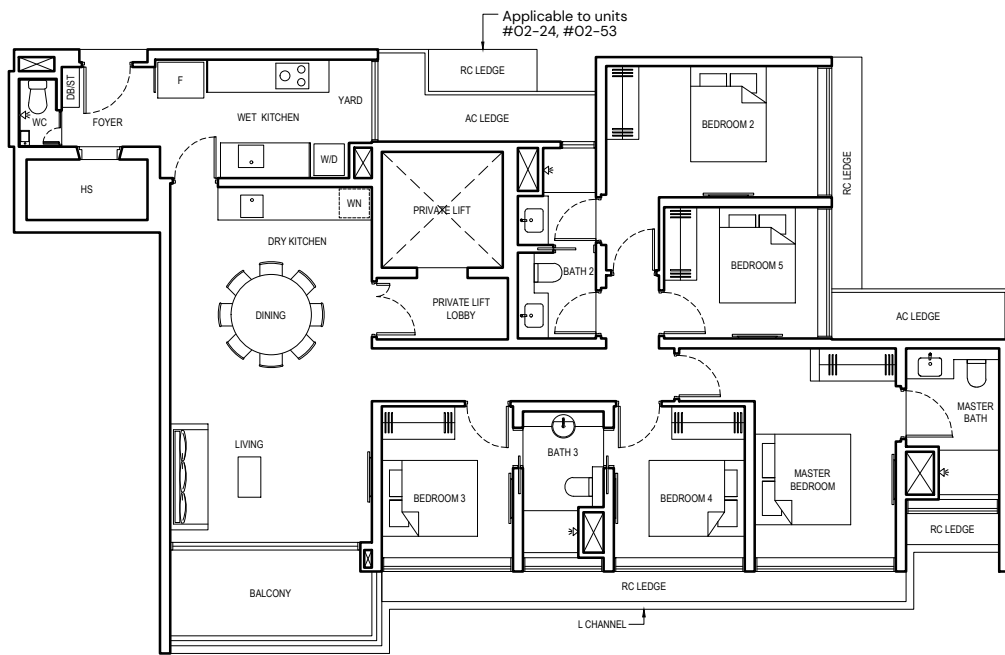
## TYPE 5BR L-PES

156 SQM/ 1679 SQFT  
 (INCLUSIVE OF 8 SQM PES,  
 9 SQM AC LEDGE & 4 SQM  
 PRIVATE LIFT LOBBY)  
 BLOCK 8 #01-24  
 BLOCK 16 #01-53



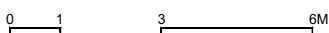
## TYPE 5BR L

157 SQM/ 1690 SQFT  
 (INCLUSIVE OF 8 SQM BALCONY,  
 9 SQM AC LEDGE & 4 SQM  
 PRIVATE LIFT LOBBY)  
 BLOCK 8 #02-24 to #17-24  
 BLOCK 16 #02-53 to #17-53

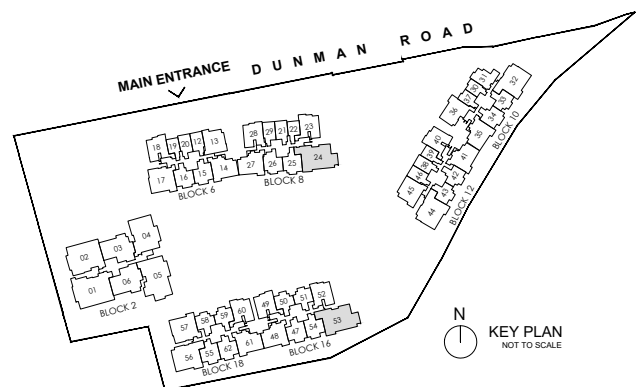


### LEGEND:

|     |                    |    |                                                 |
|-----|--------------------|----|-------------------------------------------------|
| F   | FRIDGE             | HS | HOUSEHOLD SHELTER                               |
| W/D | WASHER AND DRYER   | WN | WINE CHILLER                                    |
| DB  | DISTRIBUTION BOARD | AC | AIR-CONDITIONER                                 |
| ST  | STORE              | RC | REINFORCED CONCRETE (EXCLUDED FROM STRATA AREA) |
| WC  | WATER CLOSET       | ⊠  | VOID SPACE (EXCLUDED FROM STRATA AREA)          |



ALL PLANS ARE SUBJECT TO CHANGES BY THE RELEVANT AUTHORITIES.  
 MEASUREMENTS ARE APPROXIMATE ONLY AND SUBJECT TO FINAL SURVEY.  
 INFORMATION ACCURATE AT POINT OF PRINTING.  
 BP NO.: A1716-00003-2022-BP01 DATED 15 MAY 2023



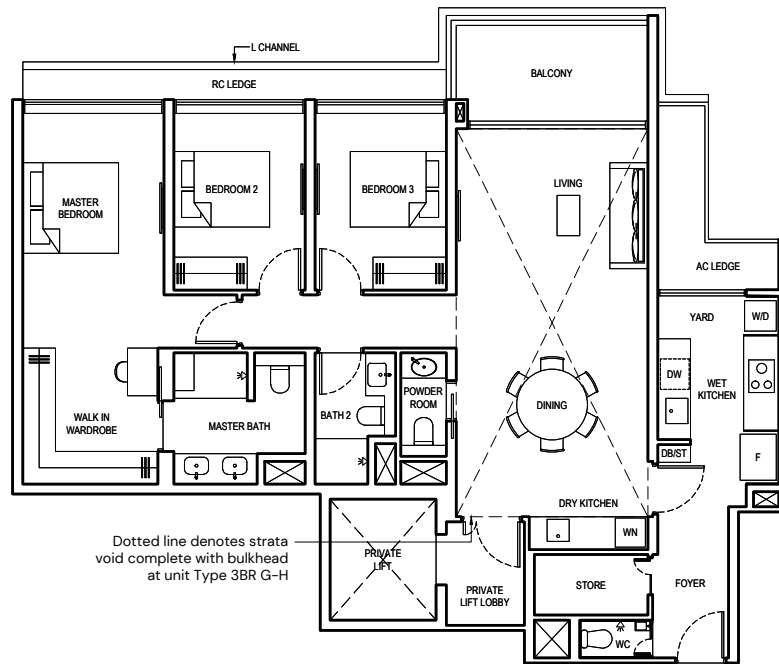
# 3 BEDROOM (GRAND)

## TYPE 3BR G

137 SQM/ 1475 SQFT  
 (INCLUSIVE OF 9 SQM BALCONY, 6 SQM AC LEDGE  
 & 3 SQM PRIVATE LIFT LOBBY)  
 BLOCK 2 #03-03 to #17-03  
 #03-06 to #17-06 (mirrored)

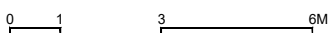
## TYPE 3BR G-H

169 SQM/ 1819 SQFT  
 (INCLUSIVE OF 9 SQM BALCONY, 6 SQM AC LEDGE,  
 3 SQM PRIVATE LIFT LOBBY & 32 SQM STRATA VOID)  
 BLOCK 2 #18-03  
 #18-06 (mirrored)

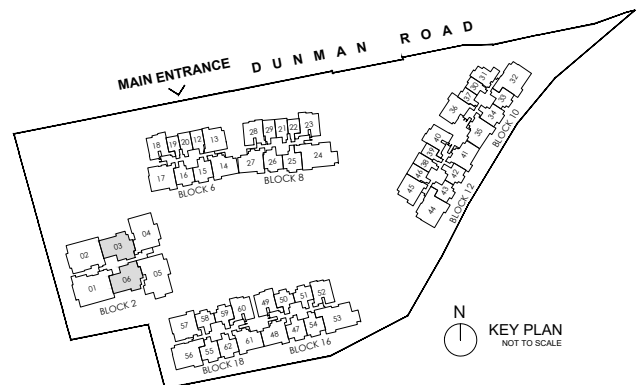


### LEGEND:

- |     |                    |    |                                                 |
|-----|--------------------|----|-------------------------------------------------|
| F   | FRIDGE             | WN | WINE CHILLER                                    |
| W/D | WASHER AND DRYER   | DW | DISHWASHER                                      |
| DB  | DISTRIBUTION BOARD | AC | AIR-CONDITIONER                                 |
| ST  | STORE              | RC | REINFORCED CONCRETE (EXCLUDED FROM STRATA AREA) |
| WC  | WATER CLOSET       | ⊠  | VOID SPACE (EXCLUDED FROM STRATA AREA)          |



ALL PLANS ARE SUBJECT TO CHANGES BY THE RELEVANT AUTHORITIES.  
 MEASUREMENTS ARE APPROXIMATE ONLY AND SUBJECT TO FINAL SURVEY.  
 INFORMATION ACCURATE AT POINT OF PRINTING.  
 BP NO.: A1716-00003-2022-BP01 DATED 15 MAY 2023



N  
 KEY PLAN  
 NOT TO SCALE

# 4 BEDROOM (GRAND)

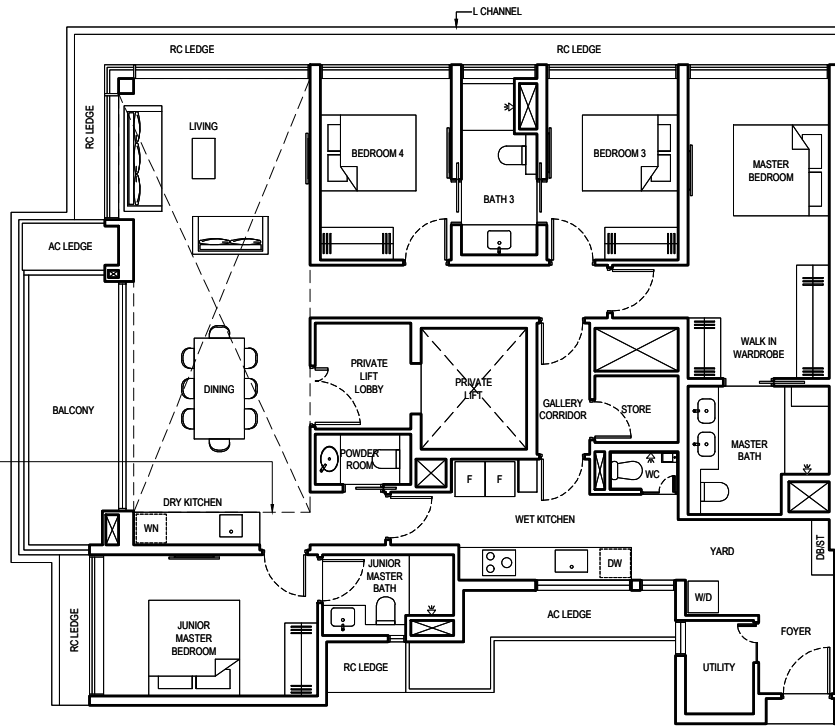
## TYPE 4BR G1

179 SQM/ 1927 SQFT  
 (INCLUSIVE OF 11 SQM BALCONY, 9 SQM AC LEDGE  
 & 5 SQM PRIVATE LIFT LOBBY)  
 BLOCK 2 #03-02 to #17-02

## TYPE 4BR G1-H

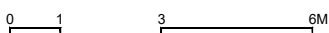
215 SQM/ 2314 SQFT  
 (INCLUSIVE OF 11 SQM BALCONY, 9 SQM AC LEDGE,  
 5 SQM PRIVATE LIFT LOBBY & 36 SQM STRATA VOID)  
 BLOCK 2 #18-02

Dotted line denotes strata  
 void complete with bulkhead  
 at unit Type 4BR G1-H

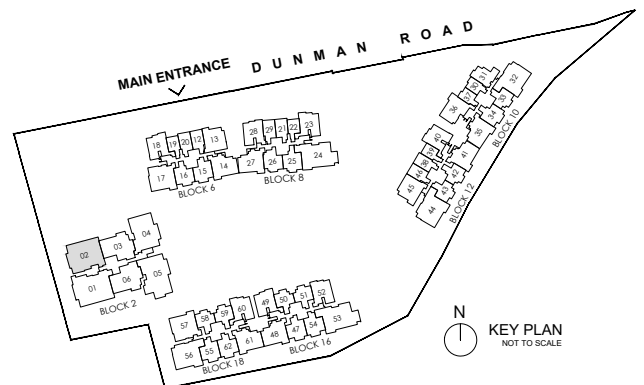


### LEGEND:

- |     |                    |    |                                                 |
|-----|--------------------|----|-------------------------------------------------|
| F   | FRIDGE             | WN | WINE CHILLER                                    |
| W/D | WASHER AND DRYER   | DW | DISHWASHER                                      |
| DB  | DISTRIBUTION BOARD | AC | AIR-CONDITIONER                                 |
| ST  | STORE              | RC | REINFORCED CONCRETE (EXCLUDED FROM STRATA AREA) |
| WC  | WATER CLOSET       | ⊠  | VOID SPACE (EXCLUDED FROM STRATA AREA)          |



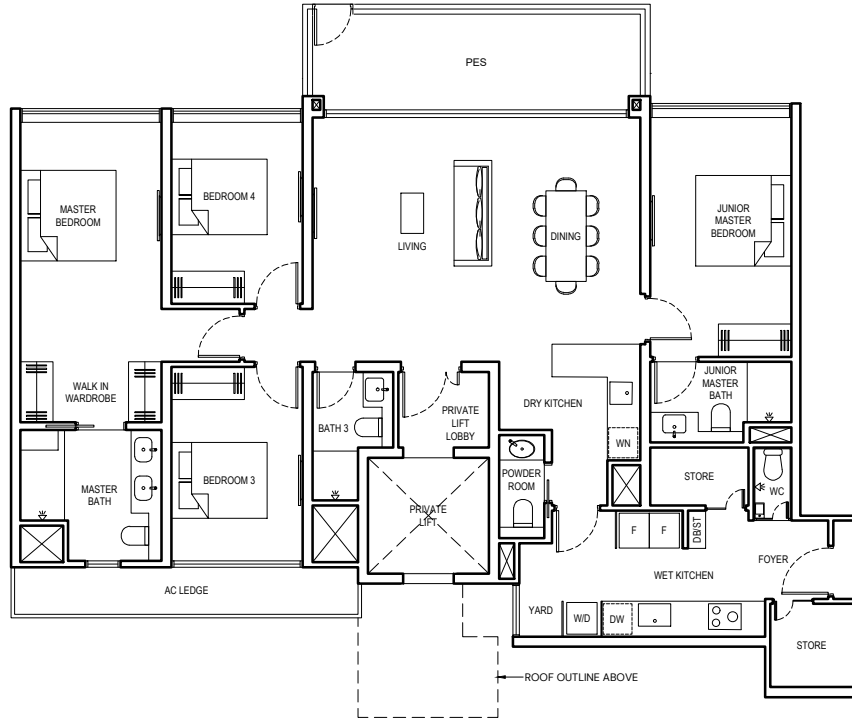
ALL PLANS ARE SUBJECT TO CHANGES BY THE RELEVANT AUTHORITIES.  
 MEASUREMENTS ARE APPROXIMATE ONLY AND SUBJECT TO FINAL SURVEY.  
 INFORMATION ACCURATE AT POINT OF PRINTING.  
 BP NO.: A1716-00003-2022-BP01 DATED 15 MAY 2023



# 4 BEDROOM (GRAND)

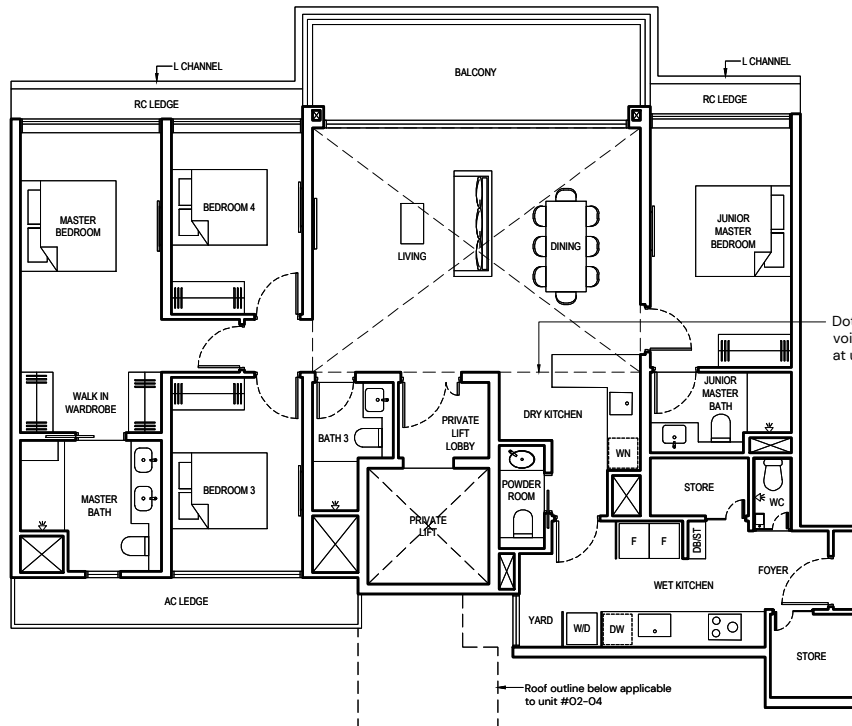
## TYPE 4BR G2-PES

166 SQM/ 1787 SQFT  
 (INCLUSIVE OF 15 SQM PES, 7 SQM AC LEDGE  
 & 4 SQM PRIVATE LIFT LOBBY)  
 BLOCK 2 #01-04



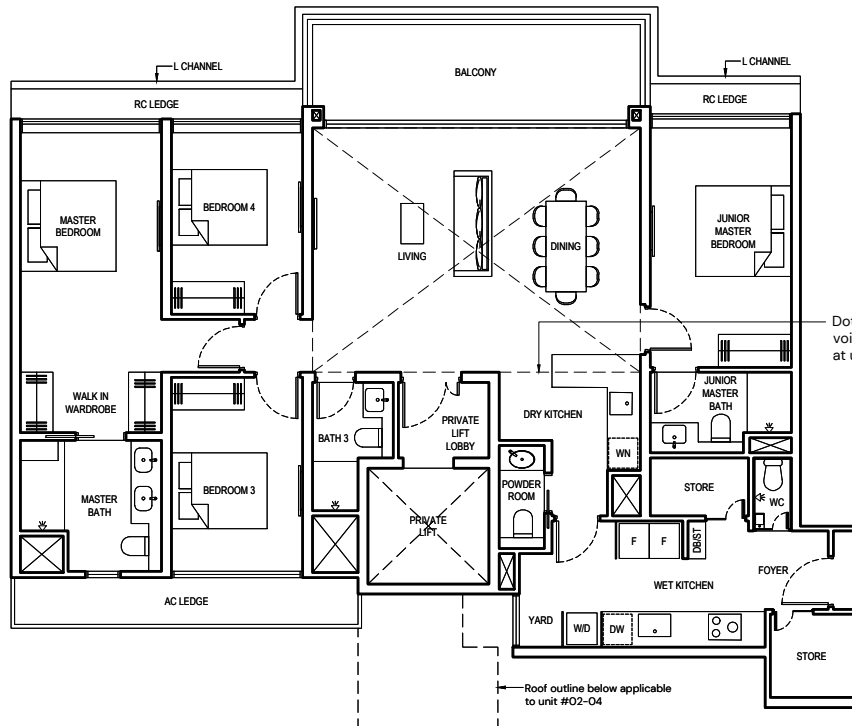
## TYPE 4BR G2

166 SQM/ 1787 SQFT  
 (INCLUSIVE OF 15 SQM BALCONY, 7 SQM AC LEDGE  
 & 4 SQM PRIVATE LIFT LOBBY)  
 BLOCK 2 #02-04 to #17-04



## TYPE 4BR G2-H

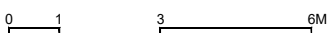
200 SQM/ 2153 SQFT  
 (INCLUSIVE OF 15 SQM BALCONY, 7 SQM AC LEDGE,  
 4 SQM PRIVATE LIFT LOBBY & 34 SQM STRATA VOID)  
 BLOCK 2 #18-04



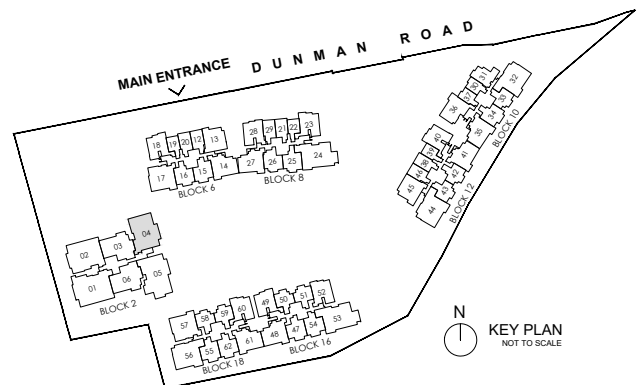
Dotted line denotes strata void complete with bulkhead at unit Type 4BR G2-H

### LEGEND:

- |     |                    |    |                                                 |
|-----|--------------------|----|-------------------------------------------------|
| F   | FRIDGE             | WN | WINE CHILLER                                    |
| W/D | WASHER AND DRYER   | DW | DISHWASHER                                      |
| DB  | DISTRIBUTION BOARD | AC | AIR-CONDITIONER                                 |
| ST  | STORE              | RC | REINFORCED CONCRETE (EXCLUDED FROM STRATA AREA) |
| WC  | WATER CLOSET       | ⊠  | VOID SPACE (EXCLUDED FROM STRATA AREA)          |



ALL PLANS ARE SUBJECT TO CHANGES BY THE RELEVANT AUTHORITIES.  
 MEASUREMENTS ARE APPROXIMATE ONLY AND SUBJECT TO FINAL SURVEY.  
 INFORMATION ACCURATE AT POINT OF PRINTING.  
 BP NO.: A1716-00003-2022-BP01 DATED 15 MAY 2023



# 5 BEDROOM (GRAND)

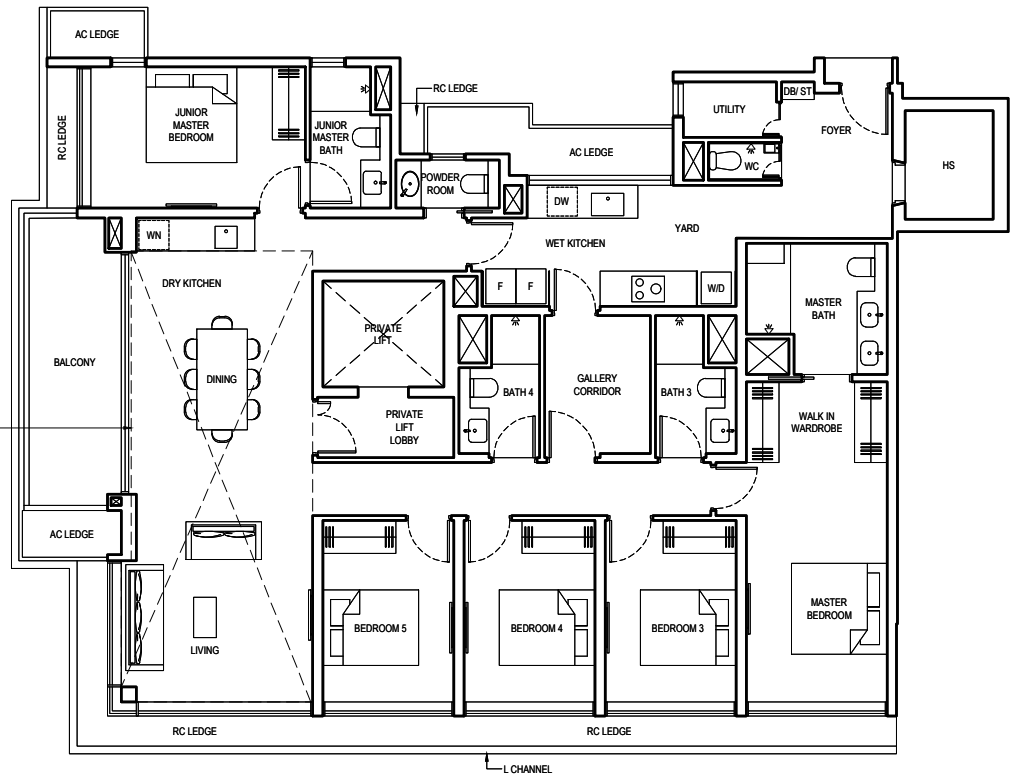
## TYPE 5BR G1

206 SQM/ 2217 SQFT  
 (INCLUSIVE OF 12 SQM BALCONY,  
 10 SQM AC LEDGE & 4 SQM  
 PRIVATE LIFT LOBBY)  
 BLOCK 2 #03-01 to #17-01

## TYPE 5BR G1-H

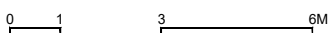
243 SQM/ 2615 SQFT  
 (INCLUSIVE OF 12 SQM BALCONY,  
 10 SQM AC LEDGE, 4 SQM PRIVATE  
 LIFT LOBBY & 37 SQM STRATA VOID)  
 BLOCK 2 #18-01

Dotted line denotes strata  
 void complete with bulkhead  
 at unit Type 5BR G1-H

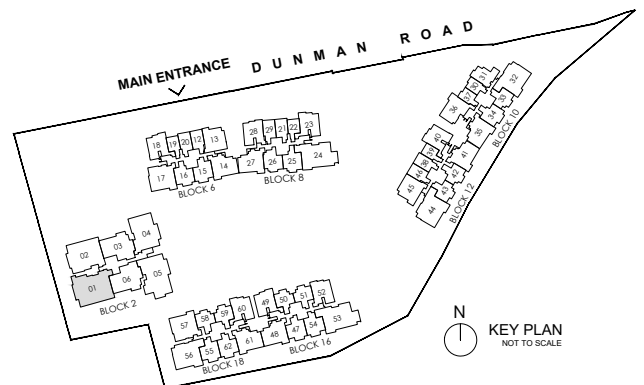


### LEGEND:

|     |                    |    |                                                 |
|-----|--------------------|----|-------------------------------------------------|
| F   | FRIDGE             | WN | WINE CHILLER                                    |
| W/D | WASHER AND DRYER   | DW | DISHWASHER                                      |
| DB  | DISTRIBUTION BOARD | AC | AIR-CONDITIONER                                 |
| ST  | STORE              | RC | REINFORCED CONCRETE (EXCLUDED FROM STRATA AREA) |
| WC  | WATER CLOSET       | ⊠  | VOID SPACE (EXCLUDED FROM STRATA AREA)          |
| HS  | HOUSEHOLD SHELTER  |    |                                                 |



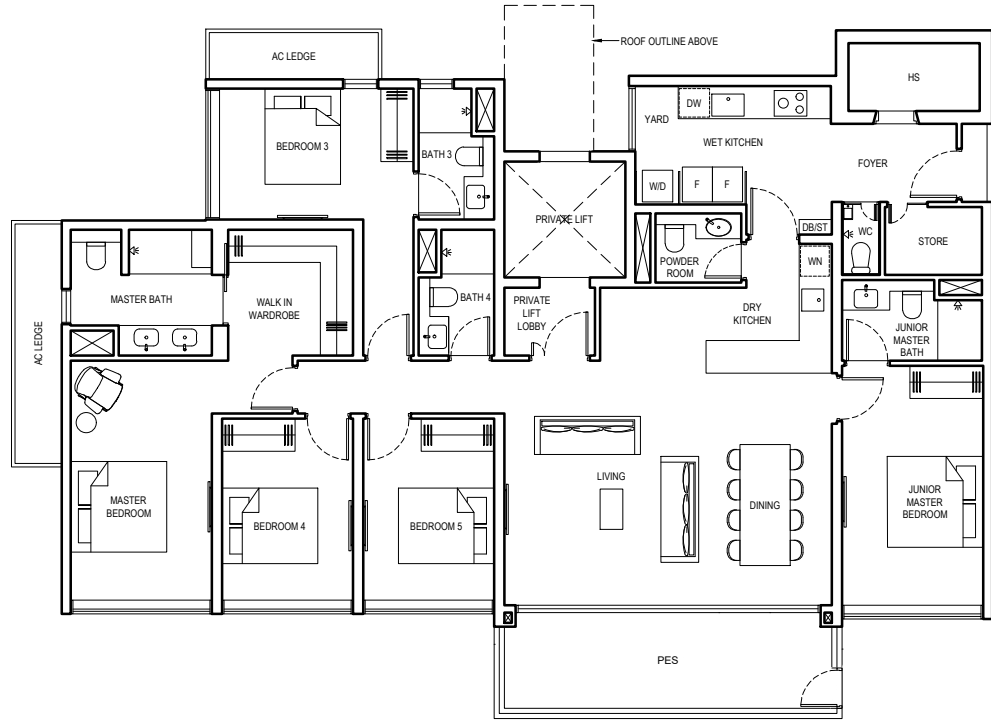
ALL PLANS ARE SUBJECT TO CHANGES BY THE RELEVANT AUTHORITIES.  
 MEASUREMENTS ARE APPROXIMATE ONLY AND SUBJECT TO FINAL SURVEY.  
 INFORMATION ACCURATE AT POINT OF PRINTING.  
 BP NO.: A1716-00003-2022-BP01 DATED 15 MAY 2023



# 5 BEDROOM (GRAND)

## TYPE 5BR G2-PES

198 SQM/ 2131 SQFT  
 (INCLUSIVE OF 15 SQM PES,  
 9 SQM AC LEDGE & 3 SQM  
 PRIVATE LIFT LOBBY)  
 BLOCK 2 #01-05

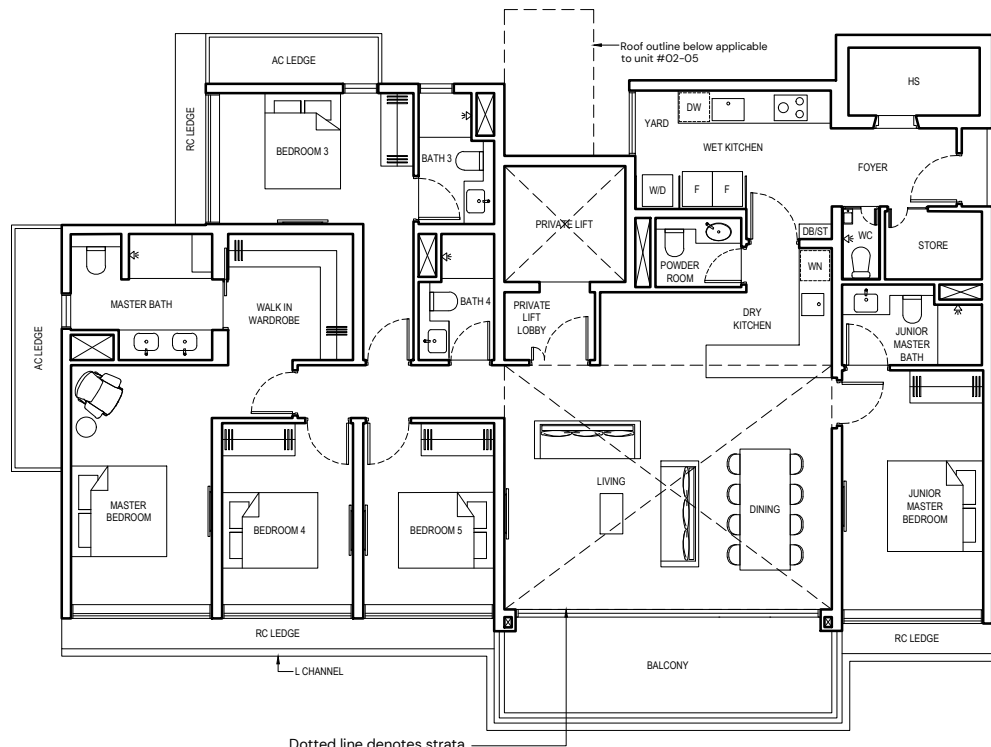


## TYPE 5BR G2

198 SQM/ 2131 SQFT  
 (INCLUSIVE OF 15 SQM BALCONY,  
 9 SQM AC LEDGE & 3 SQM  
 PRIVATE LIFT LOBBY)  
 BLOCK 2 #02-05 to #17-05

## TYPE 5BR G2-H

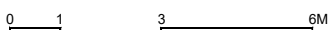
232 SQM/ 2497 SQFT  
 (INCLUSIVE OF 15 SQM BALCONY,  
 9 SQM AC LEDGE, 3 SQM PRIVATE  
 LIFT LOBBY & 34 SQM STRATA VOID)  
 BLOCK 2 #18-05



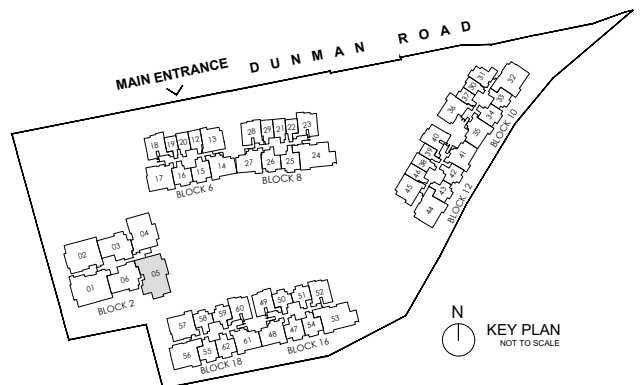
Dotted line denotes strata void complete with bulkhead at unit Type 5BR G2-H

### LEGEND:

- |     |                    |    |                                                 |
|-----|--------------------|----|-------------------------------------------------|
| F   | FRIDGE             | WN | WINE CHILLER                                    |
| W/D | WASHER AND DRYER   | DW | DISHWASHER                                      |
| DB  | DISTRIBUTION BOARD | AC | AIR-CONDITIONER                                 |
| ST  | STORE              | RC | REINFORCED CONCRETE (EXCLUDED FROM STRATA AREA) |
| WC  | WATER CLOSET       | ⊠  | VOID SPACE (EXCLUDED FROM STRATA AREA)          |
| HS  | HOUSEHOLD SHELTER  |    |                                                 |



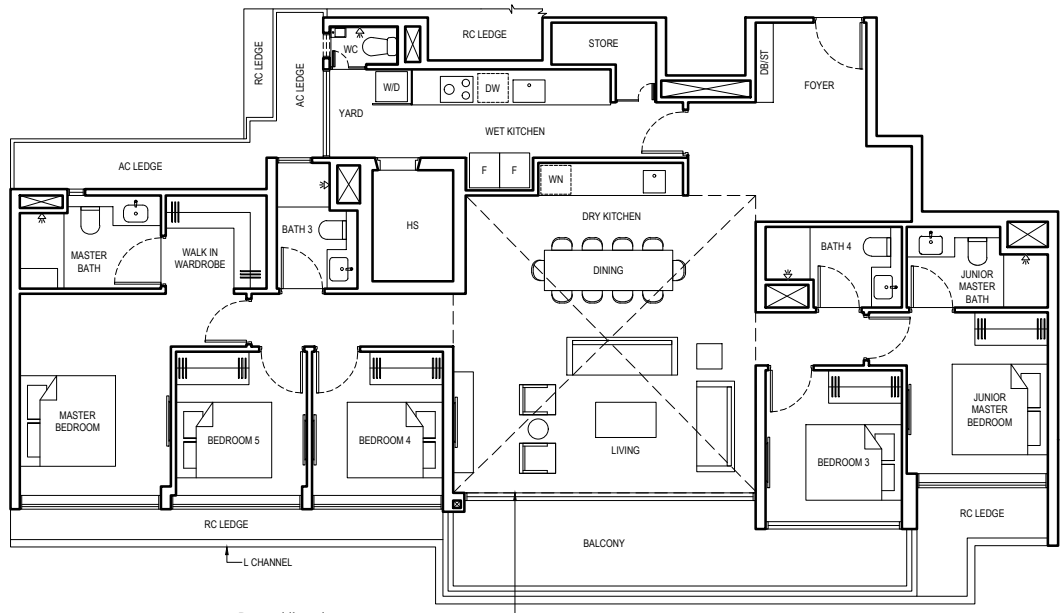
ALL PLANS ARE SUBJECT TO CHANGES BY THE RELEVANT AUTHORITIES.  
 MEASUREMENTS ARE APPROXIMATE ONLY AND SUBJECT TO FINAL SURVEY.  
 INFORMATION ACCURATE AT POINT OF PRINTING.  
 BP NO.: A1716-00003-2022-BP01 DATED 15 MAY 2023



# PENTHOUSE (GRAND)

## TYPE PH-1

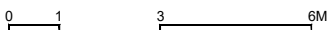
221 SQM/ 2379 SQFT  
 (INCLUSIVE OF 16 SQM BALCONY,  
 9 SQM AC LEDGE & 38 SQM STRATA VOID)  
 BLOCK 10 #18-34



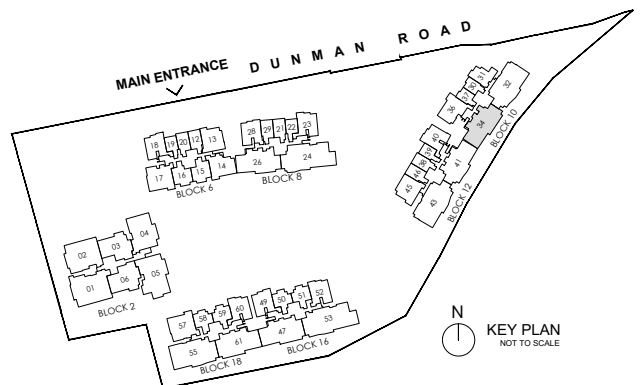
Dotted line denotes strata void complete with bulkhead

### LEGEND:

- |     |                    |    |                                                 |
|-----|--------------------|----|-------------------------------------------------|
| F   | FRIDGE             | WN | WINE CHILLER                                    |
| W/D | WASHER AND DRYER   | DW | DISHWASHER                                      |
| DB  | DISTRIBUTION BOARD | AC | AIR-CONDITIONER                                 |
| ST  | STORE              | RC | REINFORCED CONCRETE (EXCLUDED FROM STRATA AREA) |
| WC  | WATER CLOSET       | ☒  | VOID SPACE (EXCLUDED FROM STRATA AREA)          |
| HS  | HOUSEHOLD SHELTER  |    |                                                 |



ALL PLANS ARE SUBJECT TO CHANGES BY THE RELEVANT AUTHORITIES.  
 MEASUREMENTS ARE APPROXIMATE ONLY AND SUBJECT TO FINAL SURVEY.  
 INFORMATION ACCURATE AT POINT OF PRINTING.  
 BP NO.: A1716-00003-2022-BP01 DATED 15 MAY 2023

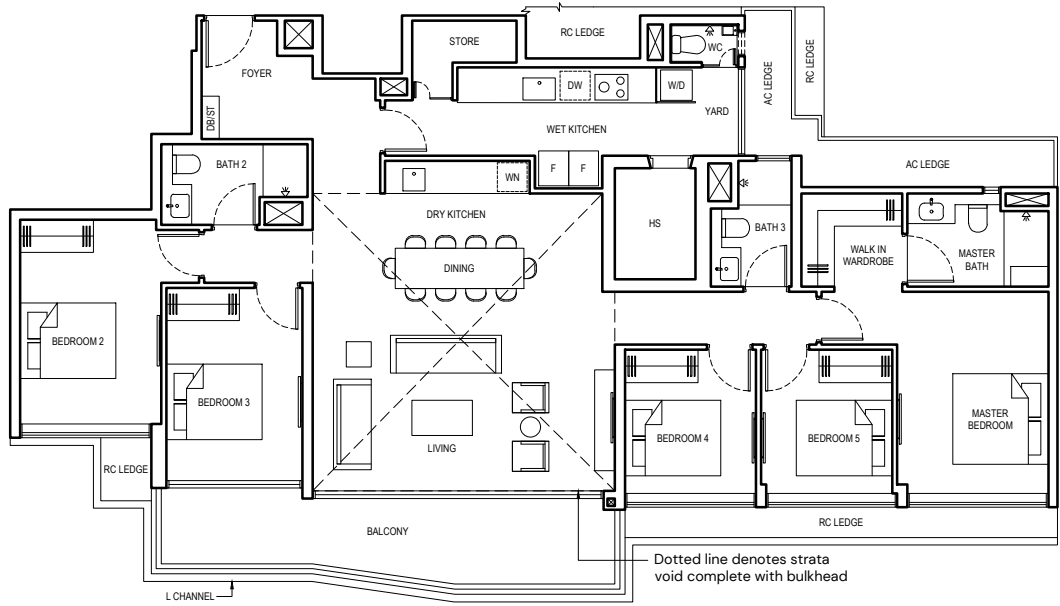




# PENTHOUSE (GRAND)

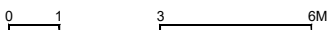
## TYPE PH-2

217 SQM/ 2336 SQFT  
 (INCLUSIVE OF 17 SQM BALCONY,  
 9 SQM AC LEDGE & 38 SQM STRATA VOID)  
 BLOCK 12 #18-41

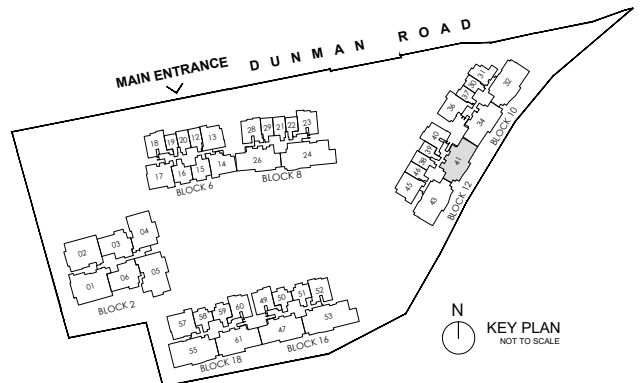


### LEGEND:

|     |                    |    |                                                 |
|-----|--------------------|----|-------------------------------------------------|
| F   | FRIDGE             | WN | WINE CHILLER                                    |
| W/D | WASHER AND DRYER   | DW | DISHWASHER                                      |
| DB  | DISTRIBUTION BOARD | AC | AIR-CONDITIONER                                 |
| ST  | STORE              | RC | REINFORCED CONCRETE (EXCLUDED FROM STRATA AREA) |
| WC  | WATER CLOSET       | ☒  | VOID SPACE (EXCLUDED FROM STRATA AREA)          |
| HS  | HOUSEHOLD SHELTER  |    |                                                 |



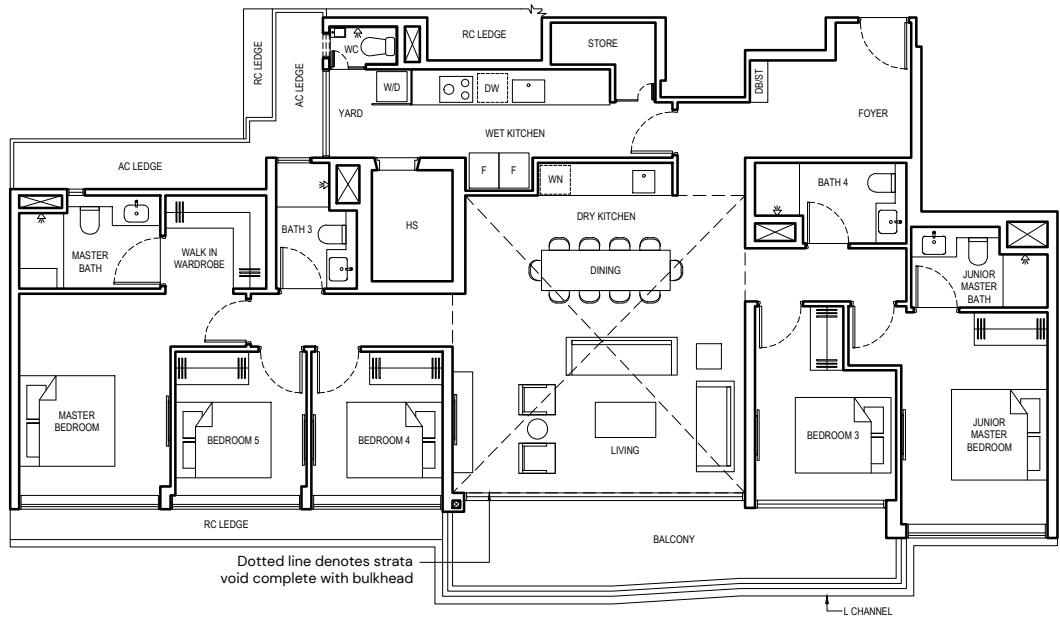
ALL PLANS ARE SUBJECT TO CHANGES BY THE RELEVANT AUTHORITIES.  
 MEASUREMENTS ARE APPROXIMATE ONLY AND SUBJECT TO FINAL SURVEY.  
 INFORMATION ACCURATE AT POINT OF PRINTING.  
 BP NO.: A1716-00003-2022-BP01 DATED 15 MAY 2023



# PENTHOUSE (GRAND)

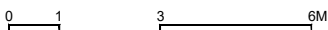
## TYPE PH-3

222 SQM/ 2390 SQFT  
 (INCLUSIVE OF 16 SQM BALCONY,  
 9 SQM AC LEDGE & 36 SQM STRATA VOID)  
 BLOCK 8 #18-26

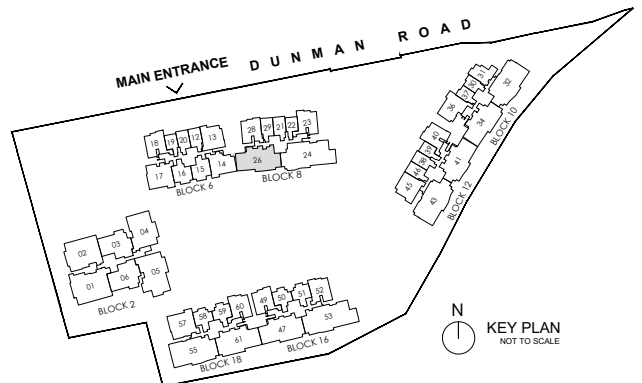


### LEGEND:

- |     |                    |    |                                                 |
|-----|--------------------|----|-------------------------------------------------|
| F   | FRIDGE             | WN | WINE CHILLER                                    |
| W/D | WASHER AND DRYER   | DW | DISHWASHER                                      |
| DB  | DISTRIBUTION BOARD | AC | AIR-CONDITIONER                                 |
| ST  | STORE              | RC | REINFORCED CONCRETE (EXCLUDED FROM STRATA AREA) |
| WC  | WATER CLOSET       | ☒  | VOID SPACE (EXCLUDED FROM STRATA AREA)          |
| HS  | HOUSEHOLD SHELTER  |    |                                                 |



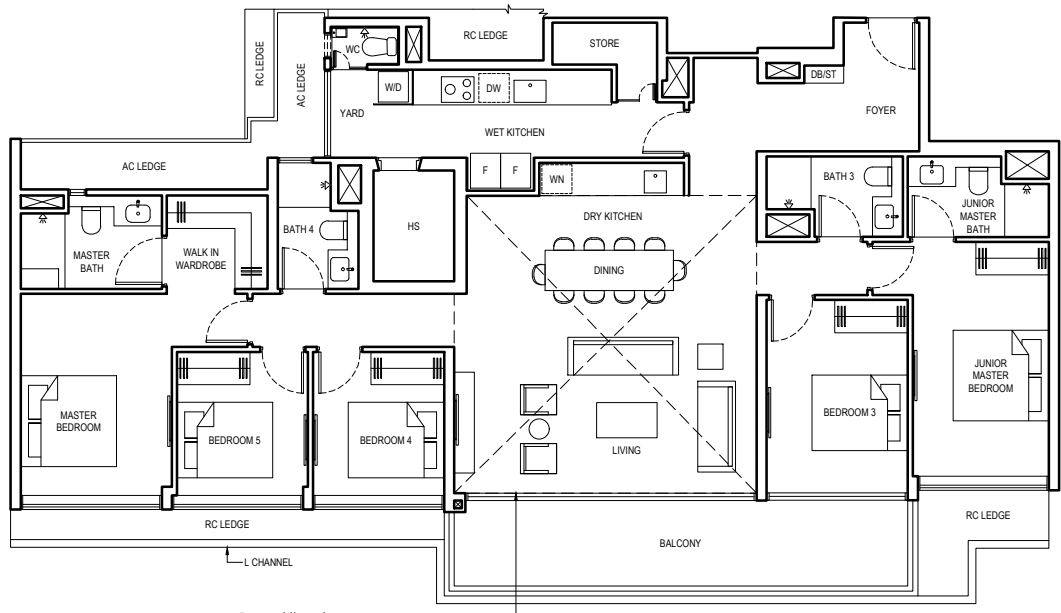
ALL PLANS ARE SUBJECT TO CHANGES BY THE RELEVANT AUTHORITIES.  
 MEASUREMENTS ARE APPROXIMATE ONLY AND SUBJECT TO FINAL SURVEY.  
 INFORMATION ACCURATE AT POINT OF PRINTING.  
 BP NO.: A1716-00003-2022-BP01 DATED 15 MAY 2023



# PENTHOUSE (GRAND)

## TYPE PH-4

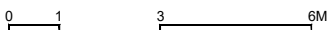
226 SQM/ 2433 SQFT  
 (INCLUSIVE OF 18 SQM BALCONY,  
 9 SQM AC LEDGE & 38 SQM STRATA VOID)  
 BLOCK 16 #18-47  
 BLOCK 18 #18-61 (mirrored)



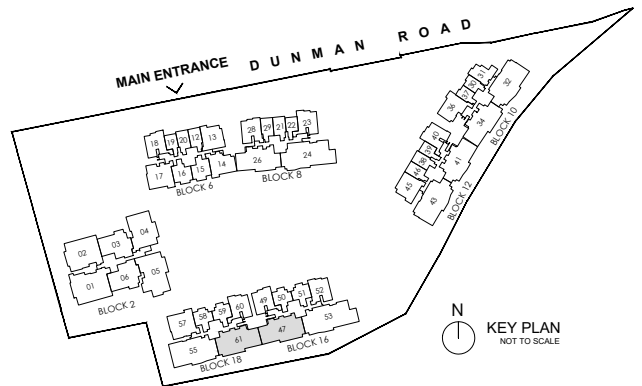
Dotted line denotes strata void complete with bulkhead

### LEGEND:

- |     |                    |    |                                                 |
|-----|--------------------|----|-------------------------------------------------|
| F   | FRIDGE             | WN | WINE CHILLER                                    |
| W/D | WASHER AND DRYER   | DW | DISHWASHER                                      |
| DB  | DISTRIBUTION BOARD | AC | AIR-CONDITIONER                                 |
| ST  | STORE              | RC | REINFORCED CONCRETE (EXCLUDED FROM STRATA AREA) |
| WC  | WATER CLOSET       | ☒  | VOID SPACE (EXCLUDED FROM STRATA AREA)          |
| HS  | HOUSEHOLD SHELTER  |    |                                                 |



ALL PLANS ARE SUBJECT TO CHANGES BY THE RELEVANT AUTHORITIES.  
 MEASUREMENTS ARE APPROXIMATE ONLY AND SUBJECT TO FINAL SURVEY.  
 INFORMATION ACCURATE AT POINT OF PRINTING.  
 BP NO.: A1716-00003-2022-BP01 DATED 15 MAY 2023

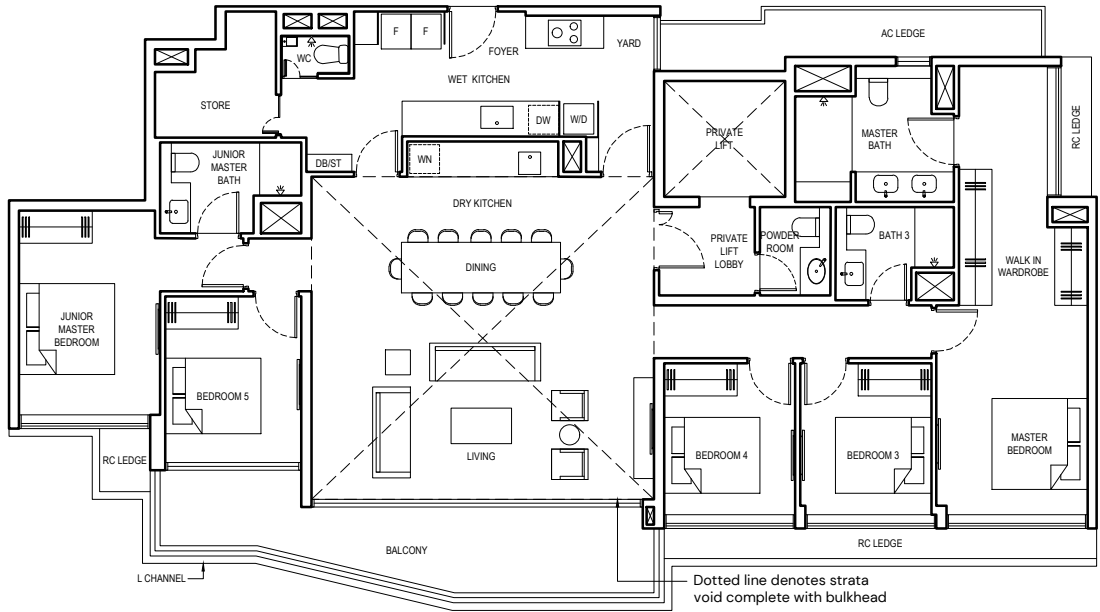


N  
 KEY PLAN  
 NOT TO SCALE

# PENTHOUSE (GRAND)

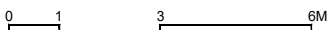
## TYPE PH-5

247 SQM/ 2659 SQFT  
 (INCLUSIVE OF 18 SQM BALCONY, 9 SQM AC LEDGE,  
 3 SQM PRIVATE LIFT LOBBY & 46 SQM STRATA VOID)  
 BLOCK 10 #18-32  
 BLOCK 12 #18-43 (mirrored)

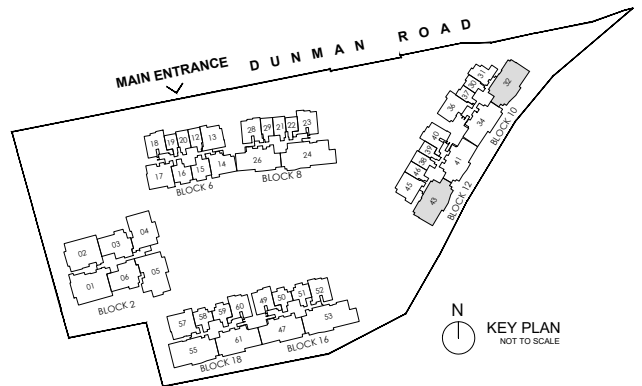


### LEGEND:

|     |                    |    |                                                 |
|-----|--------------------|----|-------------------------------------------------|
| F   | FRIDGE             | WN | WINE CHILLER                                    |
| W/D | WASHER AND DRYER   | DW | DISHWASHER                                      |
| DB  | DISTRIBUTION BOARD | AC | AIR-CONDITIONER                                 |
| ST  | STORE              | RC | REINFORCED CONCRETE (EXCLUDED FROM STRATA AREA) |
| WC  | WATER CLOSET       | ☒  | VOID SPACE (EXCLUDED FROM STRATA AREA)          |



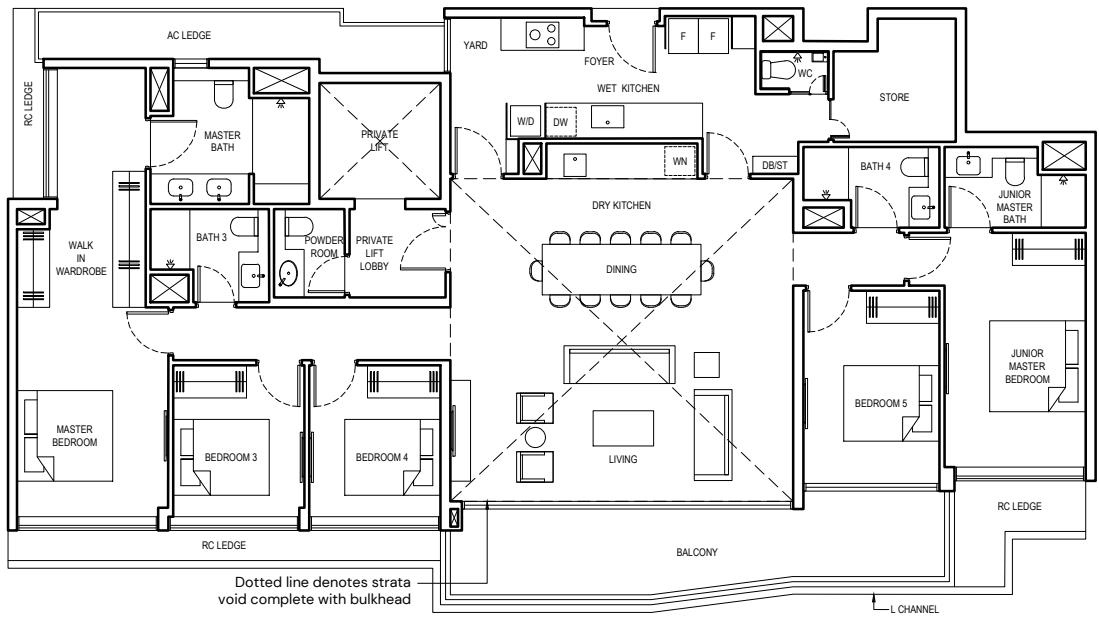
ALL PLANS ARE SUBJECT TO CHANGES BY THE RELEVANT AUTHORITIES.  
 MEASUREMENTS ARE APPROXIMATE ONLY AND SUBJECT TO FINAL SURVEY.  
 INFORMATION ACCURATE AT POINT OF PRINTING.  
 BP NO.: A1716-00003-2022-BP01 DATED 15 MAY 2023



# PENTHOUSE (GRAND)

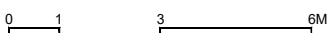
## TYPE PH-6

256 SQM/ 2756 SQFT  
 (INCLUSIVE OF 19 SQM BALCONY, 9 SQM AC LEDGE,  
 3 SQM PRIVATE LIFT LOBBY & 46 SQM STRATA VOID)  
 BLOCK 18 #18-55

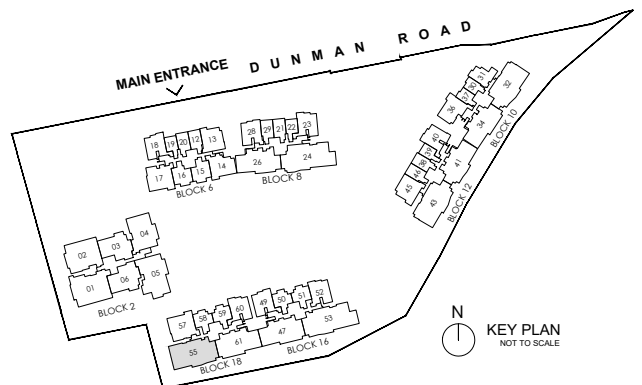


### LEGEND:

- |     |                    |    |                                                 |
|-----|--------------------|----|-------------------------------------------------|
| F   | FRIDGE             | WN | WINE CHILLER                                    |
| W/D | WASHER AND DRYER   | DW | DISHWASHER                                      |
| DB  | DISTRIBUTION BOARD | AC | AIR-CONDITIONER                                 |
| ST  | STORE              | RC | REINFORCED CONCRETE (EXCLUDED FROM STRATA AREA) |
| WC  | WATER CLOSET       | ☒  | VOID SPACE (EXCLUDED FROM STRATA AREA)          |



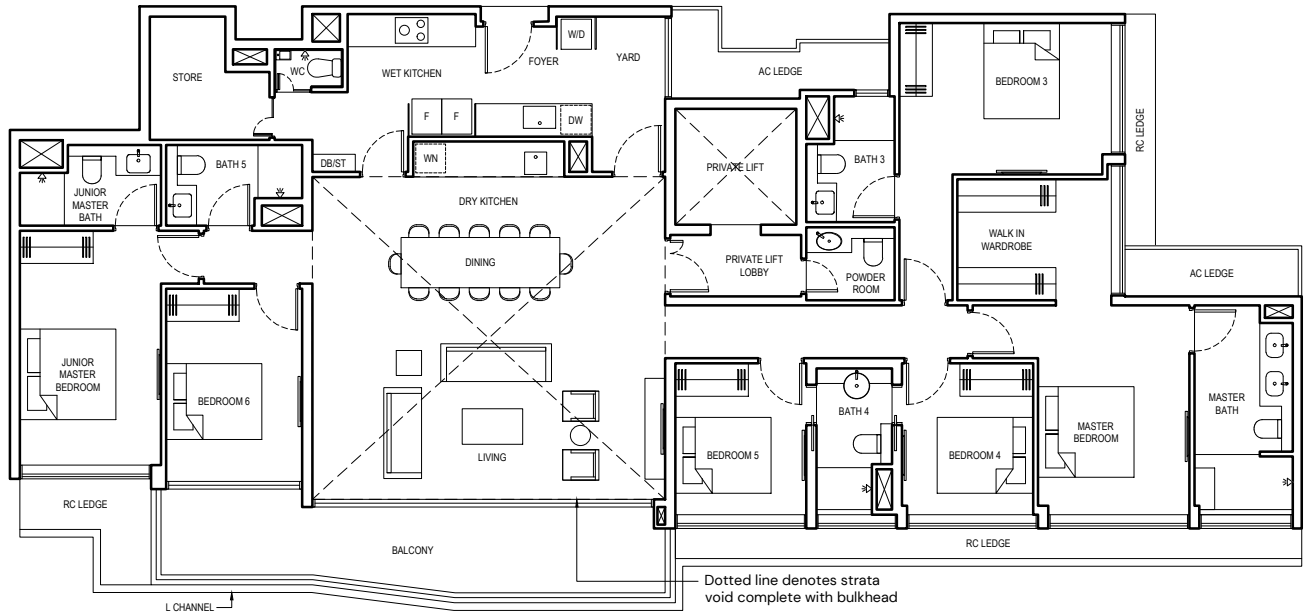
ALL PLANS ARE SUBJECT TO CHANGES BY THE RELEVANT AUTHORITIES.  
 MEASUREMENTS ARE APPROXIMATE ONLY AND SUBJECT TO FINAL SURVEY.  
 INFORMATION ACCURATE AT POINT OF PRINTING.  
 BP NO.: A1716-00003-2022-BP01 DATED 15 MAY 2023



# PENTHOUSE (GRAND)

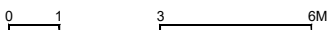
## TYPE PH-7

284 SQM/ 3057 SQFT  
 (INCLUSIVE OF 19 SQM BALCONY, 9 SQM AC LEDGE,  
 4 SQM PRIVATE LIFT LOBBY & 48 SQM STRATA VOID)  
 BLOCK 16 #18-53

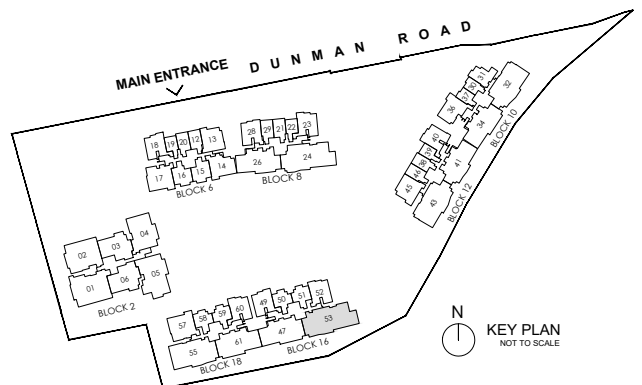


### LEGEND:

- |     |                    |    |                                                 |
|-----|--------------------|----|-------------------------------------------------|
| F   | FRIDGE             | WN | WINE CHILLER                                    |
| W/D | WASHER AND DRYER   | DW | DISHWASHER                                      |
| DB  | DISTRIBUTION BOARD | AC | AIR-CONDITIONER                                 |
| ST  | STORE              | RC | REINFORCED CONCRETE (EXCLUDED FROM STRATA AREA) |
| WC  | WATER CLOSET       | ⊠  | VOID SPACE (EXCLUDED FROM STRATA AREA)          |



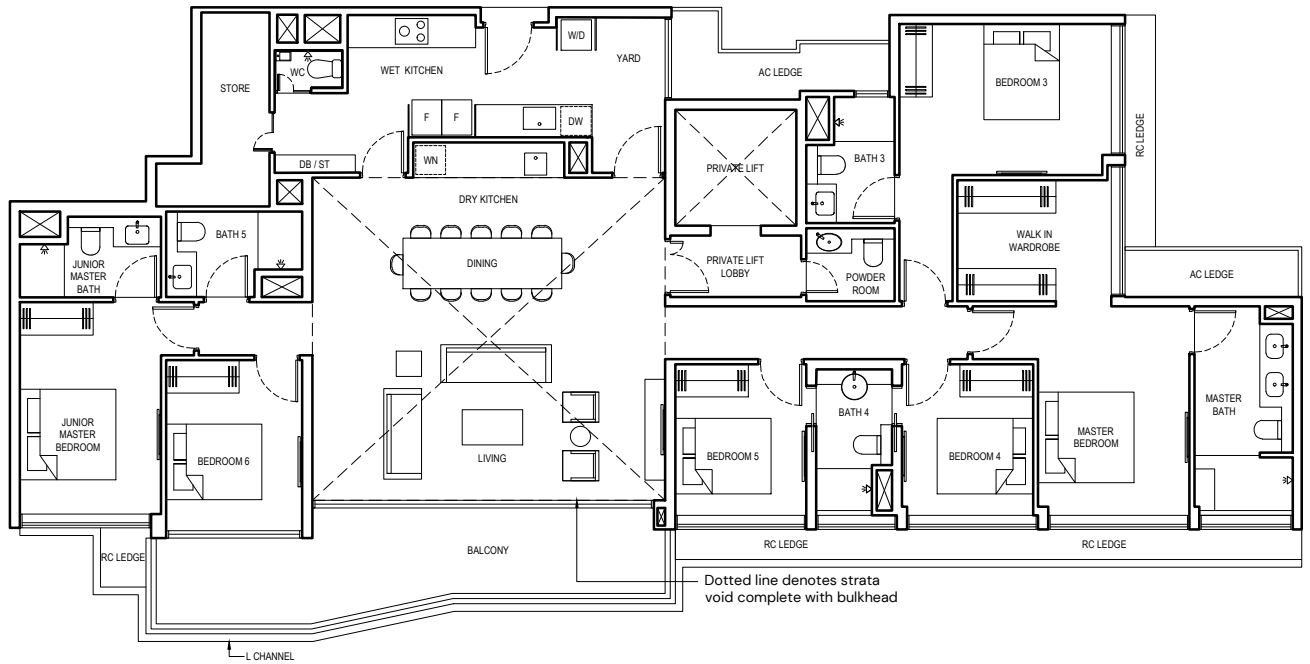
ALL PLANS ARE SUBJECT TO CHANGES BY THE RELEVANT AUTHORITIES.  
 MEASUREMENTS ARE APPROXIMATE ONLY AND SUBJECT TO FINAL SURVEY.  
 INFORMATION ACCURATE AT POINT OF PRINTING.  
 BP NO.: A1716-00003-2022-BP01 DATED 15 MAY 2023



# PENTHOUSE (GRAND)

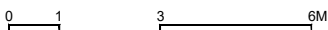
## TYPE PH-8

285 SQM/ 3068 SQFT  
 (INCLUSIVE OF 18 SQM BALCONY, 9 SQM AC LEDGE,  
 4 SQM PRIVATE LIFT LOBBY & 48 SQM STRATA VOID)  
 BLOCK 8 #18-24



### LEGEND:

- |     |                    |    |                                                 |
|-----|--------------------|----|-------------------------------------------------|
| F   | FRIDGE             | WN | WINE CHILLER                                    |
| W/D | WASHER AND DRYER   | DW | DISHWASHER                                      |
| DB  | DISTRIBUTION BOARD | AC | AIR-CONDITIONER                                 |
| ST  | STORE              | RC | REINFORCED CONCRETE (EXCLUDED FROM STRATA AREA) |
| WC  | WATER CLOSET       | ⊠  | VOID SPACE (EXCLUDED FROM STRATA AREA)          |



ALL PLANS ARE SUBJECT TO CHANGES BY THE RELEVANT AUTHORITIES.  
 MEASUREMENTS ARE APPROXIMATE ONLY AND SUBJECT TO FINAL SURVEY.  
 INFORMATION ACCURATE AT POINT OF PRINTING.  
 BP NO.: A1716-00003-2022-BP01 DATED 15 MAY 2023

